

Technical Brief: 2018-19 Student Engagement Survey

Introduction

This report provides a technical overview of South Carolina's 2018-19 statewide administration of the Cognia™ Student Engagement Survey (SES) to elementary, middle, and high school students, which was conducted from February 19th through March 29th, 2019.

The SES collects feedback directly from students about their learning experiences. Survey results provide a useful summary of the insights learned from student responses and provide schools and districts with the opportunity to understand student engagement in greater detail. These insights enable schools, districts, and states to engage in more collaborative conversations with institution stakeholders to better respond to the needs of their students.

Data from completed surveys are reported at the school level and results are categorized by type and level of engagement. The school receives data on the percentages of Committed, Compliant, and Disengaged students for each of the three domains based on completed responses.

At the state level, data is reported annually as an indicator of school quality as part of the state's accountability system under the Every Student Succeeds Act (ESSA). This "Student Engagement" indicator accounts for up to 10 points for elementary or middle schools' overall rating and up to 5 points of high schools' overall rating for the school year.

This report focuses on the three types of engagement, which correspond to reporting and intended interpretations.

Instrument Overview

Cognia's SES measures student engagement in elementary (grades 3–5), middle (grades 6-8), and high school (grades 9-12) through students' responses to 20 items about their learning experiences. A version of the survey was created for each of the three grade spans with age-appropriate item text.

The survey consists of items categorized into three domains of engagement: Behavioral, Cognitive and Emotional. Response options for all items across the three domains are first categorized according to three engagement types: Committed, Compliant, and Disengaged. Additionally, each engagement type consists of two distinct levels: Levels in the Committed type are Invested and Immersed; the Compliant types are Strategic and Ritual; and the Disengaged type levels are Retreatism and Rebellion. Individual student engagement is categorized within each domain based on the most frequent engagement type. For example, a student who answers three or more questions with Committed values within the Behavioral domain would be categorized as Committed for that domain¹. The relationship between engagement type and engagement level is presented in Table 1.

¹The Behavioral domain has six items which means it is possible that there is an even distribution of all three engagement types (i.e., two Committed, two Compliant, two Engaged). In these cases, the student would be categorized as having a Mixed engagement type.



Engagement Types		Engagement Levels	
Committed	Student finds personal meaning and value in tasks	Invested	<i>Student leader, exceeds expectations, and invests time in improvement</i>
		Immersed	<i>Performs constantly at high level, and possesses deep conceptual understanding</i>
Compliant	Meets expectations, follows rules, actively avoids consequences	Strategic	<i>Allocates necessary energy and resources and is reward driven</i>
		Ritual	<i>Minimal attention, easily distracted</i>
Disengaged	Unmotivated, low participation, actively avoids completing tasks	Retreatism	<i>Not attentive to work, distracts others, conceals lack of involvement</i>
		Rebellion	<i>Refusal to comply with requirements, actively rejects tasks</i>

Table 1. Student Engagement Domain Type and Level Descriptions

Participation

Results described in this report are based on responses from 536,118 students in grades 3–12 from 1,157 schools in 87 public school districts. The number of responses reflects completed SES responses and not necessarily the population of students, schools, or districts in the state. Participating districts and schools are listed in Appendix D.

Student response distribution:

- Responses were approximately evenly distributed across each grade within grade spans.
- Nearly equal numbers of females (49%) and males (51%) responded to the survey.
- Student respondents were predominantly White (49%-53%) followed by Black (32%-33%), multiple races (4%-5%), Asian (2%), Native American (0.3%) and Pacific Islander (0.1%).
- Majorities of students were indicated as low income in high school (53%), middle school (61%), and elementary school (64%).

Table 2 displays the number of students, by grade, who submitted complete responses. Table 3 further describes students based on their demographic data.

SES Survey Version	Grade	Number	Percentage	Number	Percentage
Elementary School (Grade 3-5)	03	55,006	32%	171,682	32%
	04	57,934	34%		
	05	58,742	34%		
Middle School (Grade 6-8)	06	58,626	35%	168,433	31%
	07	55,900	33%		
	08	53,907	32%		
High School (Grade 9-12)	09	56,814	34%	196,003	37%
	10	51,214	30%		
	11	45,978	27%		
	12	41,997	25%		

Table 2. Number of Completed Surveys by version and Grade

		Elementary		Middle		High	
		Number	Percentage	Number	Percentage	Number	Percentage
Total		171,682	100%	168,433	100%	196,003	100%
Gender	Female	84,621	49%	83,098	49%	97,190	50%
	Male	87,061	51%	85,335	51%	98,811	50%
Race	Native American	580	0.34%	552	0.33%	610	0.31%
	Asian	2,756	1.61%	2,750	1.63%	3,545	1.81%
	Black	57,310	33.38%	55,370	32.87%	62,813	32.05%
	Pacific Islander	226	0.13%	226	0.13%	257	0.13%
	White	84,603	49.28%	85,012	50.47%	104,493	53.31%
	Multiple	9,017	5.25%	7,796	4.63%	7,481	3.82%
	Unknown	17,190	10.01%	16,727	9.93%	16,804	8.57%
Low Income	Not Indicated	61,198	36%	66,449	39%	91,854	47%
	Indicated	110,484	64%	101,984	61%	104,149	53%
Disability	No Disability	146,695	85%	146,989	87%	174,153	89%
	Disability	24,987	15%	21,444	13%	21,850	11%

Table 3. Number of Completed Surveys by Version and Demographic Category

Item Analysis

Across all three versions of the SES—elementary, middle, and high school—the survey consists of items categorized and organized into the three domains of engagement: Behavioral (questions 1–6), Cognitive (questions 7–13), and Emotional (questions 14–20). Each item response is scored on a six-point scale (0–5). Point values correspond to the six engagement levels described previously.

Tables A1 to A3 in Appendix A provide item statistics according to grade-span including means (average response to an item), standard deviations (dispersion of scores; how “spread out” are scores for that item), and item correlations (relationship between item score and total domain scores). Item text for each version of the survey can be found in Appendix B. Note that “Q” followed by a number indicates question number.

Items are intended to capture a wide range of experiences from diverse groups of students. Accordingly, the items are crafted in a way that can differentiate high or low engagement students based on the theoretical constructs of student engagement and each item performs uniquely. As a result, some variation in the item means and the distribution of students’ responses is expected when looking across the instrument. Unlike student assessment results, student engagement results are not anticipated to follow a normal distribution (i.e., large proportion of responses in the mid-range; small proportion of responses in the extremes); it is expected that the distribution of responses to the items reflect varying hypotheses about student engagement.. These item variations do not impact the overall reliability of the instrument or the underlying constructs; evidence for the validity of the SES is provided through statistical exploration in subsequent sections.

Notable Findings

Elementary school version:

- Item averages were the highest for Q16 (3.99) and Q18 (3.92) while Q11 (2.39) and Q14 (1.97) had the lowest means, indicating the lower-scoring options were more frequently selected.
- The majority of survey items (17 out of 20) were moderately to strongly correlated ($r > 0.4$ to 0.6) with the domain total score (e.g., the Behavioral domain total score is the sum of Q1 through Q6).

Middle school version:

- Item averages were highest for items Q9 (3.71) and Q11 (3.57); the lowest averages were observed for items Q15 (1.73) and Q17 (1.79).
- All survey items (20 out of 20) were moderately to strongly correlated to the total domain score.

High school version:

- Students generally rated Q4 (3.38) and Q11 (3.27) the highest and Q15 (1.18) and Q17 (1.78) the lowest.
- All 20 items were moderately or strongly correlated to the total domain score.

Across grade-span versions of the SES:

- The average for Q17 was among the lowest for middle and high school students, and the third-lowest rated item for elementary students (“What do you like most about your school?”).
- The item averages decline as grade span increases (elementary = 3.18; middle = 2.90, high = 2.84).
- The Emotional domain had the lowest overall item averages across all three grade spans. The Behavioral domain demonstrated the highest item averages in elementary and high school while Cognitive domain item averages were the highest-rated in middle school.

Item Response Distribution

This section describes the distribution of SES item response scores across the three grade span versions, elementary, middle, and high school.

Elementary school version:

- The largest proportion of Committed responses were observed for Q16 (82.8%) and Q18 (77.5%).
- The two items with the largest proportion of Disengaged were Q11 (40.7%) and Q14 (41.8%).

Middle school version:

- The largest proportion of Committed responses were observed for Q2 (77.0%) and Q9 (75.4%).
- The largest proportion of Disengaged responses were Q15 (49.2%) and Q17 (61.9%).

High school version:

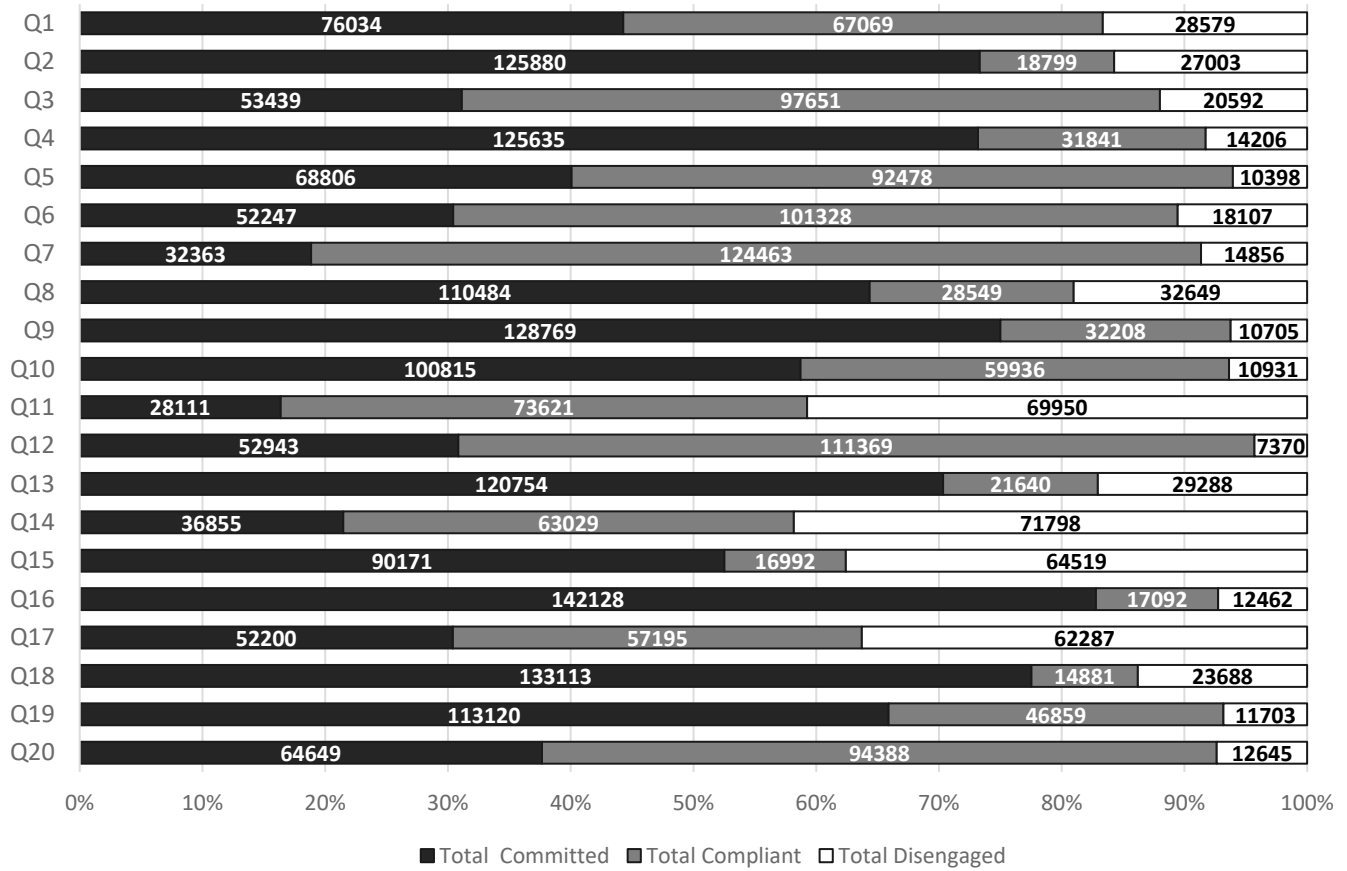
- The top two Committed items were Q8 (60.6%) and Q19 (59.1%).
- Similar to middle school students' versions, Q15 (57.1%) and Q17 (53.4%) received the largest proportion of Disengaged responses.

Overall:

- Students selected the full range of available responses across the versions, with respondents selecting the option associated with the middle engagement type (Compliant) or above for most items.
- Q16 was among the top five highest-scoring items (scored as Committed) for elementary (82.8%), middle (57.4%), and high school (57.0%) versions of the survey. This item captures students' feelings towards their teachers.
- Q9 received a high percentage of Committed responses from three out of four elementary (75.0%) and middle (75.4%) school students. This item queries how information students learn in class is used.
- Q17 has the highest frequency of Disengaged scores across grade spans for middle (61.9%) and the second lowest for high (53.4%) school students. This item reflects students' general attitude towards school.

Figures 1–3 display the number of student responses within each engagement type (Committed, Compliant, Disengaged). For more information on item response percentages by engagement type, see Tables A4 to A6 in Appendix A.

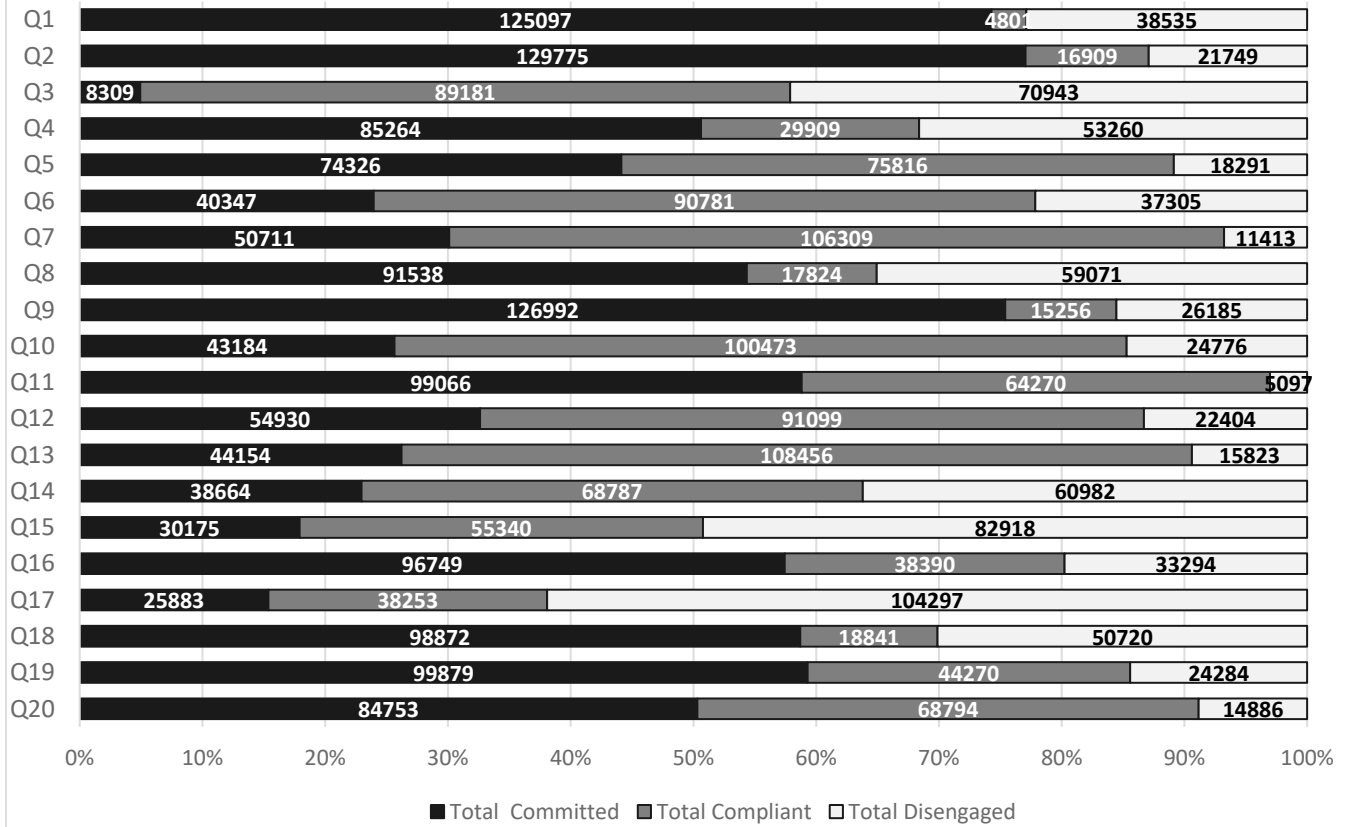
Elementary School Student Engagement Survey



Note: Full item text available in Appendix B

Figure 1. Elementary School Response Frequencies, by Engagement Type

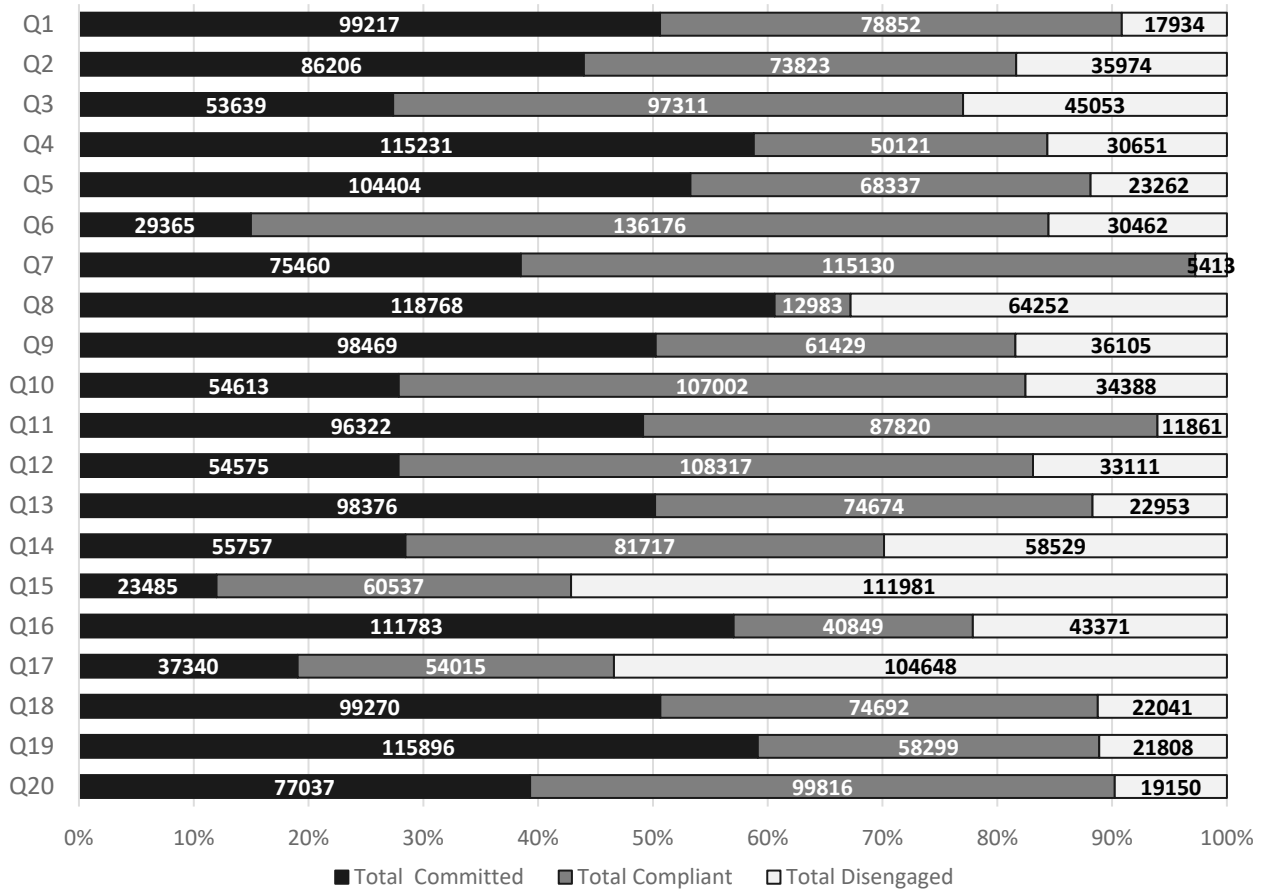
Middle School Student Engagement Survey



Note: Full item text available in Appendix B

Figure 2. Middle School Response Frequencies, by Engagement Type

High School Student Engagement Survey



Note: Full item text available in Appendix B

Figure 3. High School Response Frequencies, by Engagement Type

Geographic Locale

Data from the SES was combined with data from the National Center for Education Statistics’ (NCES) Common Core of Data (CCD)² capturing a school’s geographic locale. The NCES locale framework is composed of four basic types (City, Suburban, Town, and Rural) that each contains three subtypes relative to their distance from neighboring locales (e.g., “City: Midsize”, “Town: Remote”, etc.). A full description of each geographic locale can be found in Appendix C.

Figures 4-6 depict the distribution of total scores for each domain (Behavioral, Cognitive, and Emotional) by the geographic locale assigned to the school. A higher total domain score reflects a student selecting more Committed and Compliant responses to items versus Compliant and Disengaged.

Notable findings include:

- Students reported the highest engagement when responding from a remote or distant town or rural locale.
- Students in large and midsize suburbs, along with fringe towns reported the lowest engagement by domain.

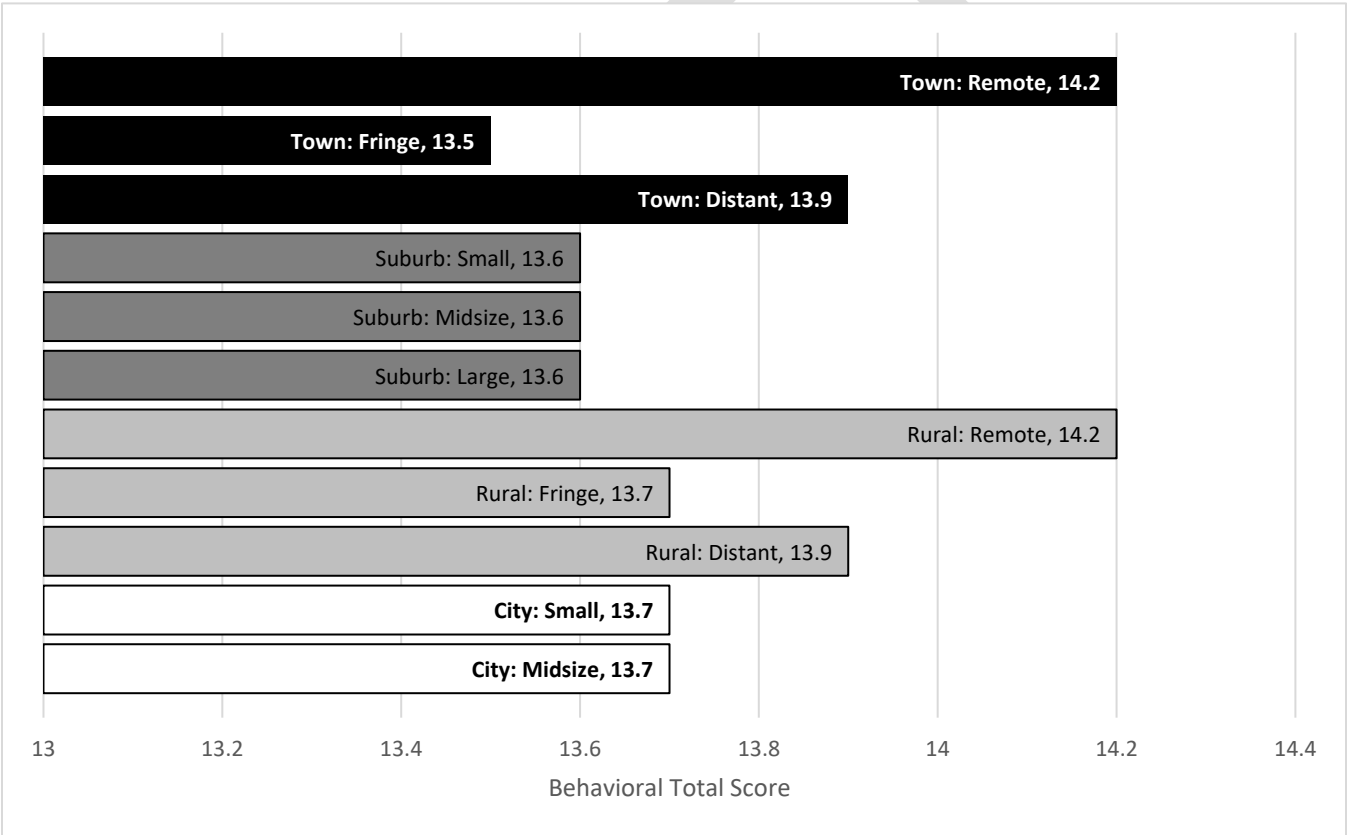


Figure 4. Total Behavioral Domain Total Score by Geographic Locale

² National Center for Education Statistics, Institute of Education Sciences, U.S. Department of Education. Washington, DC. Retrieved February 3, 2020 from nces.ed.gov/ccd

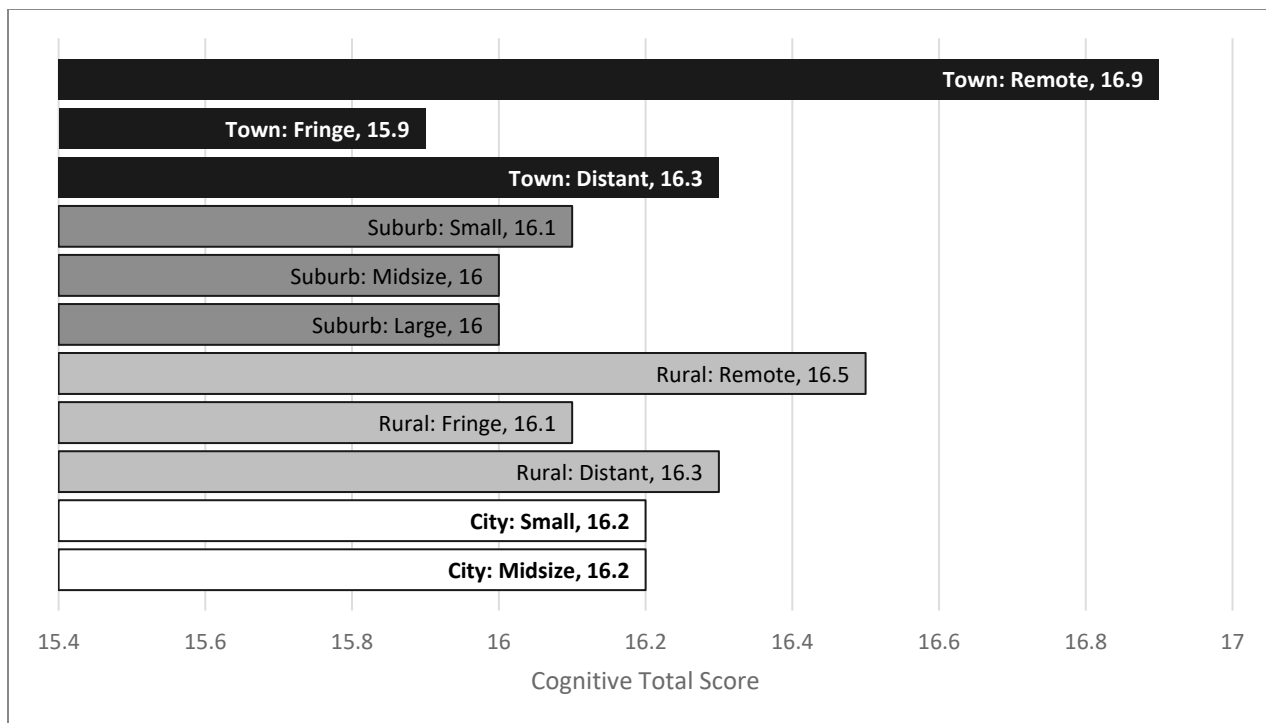


Figure 5. Total Cognitive Domain Total Score by Geographic Locale

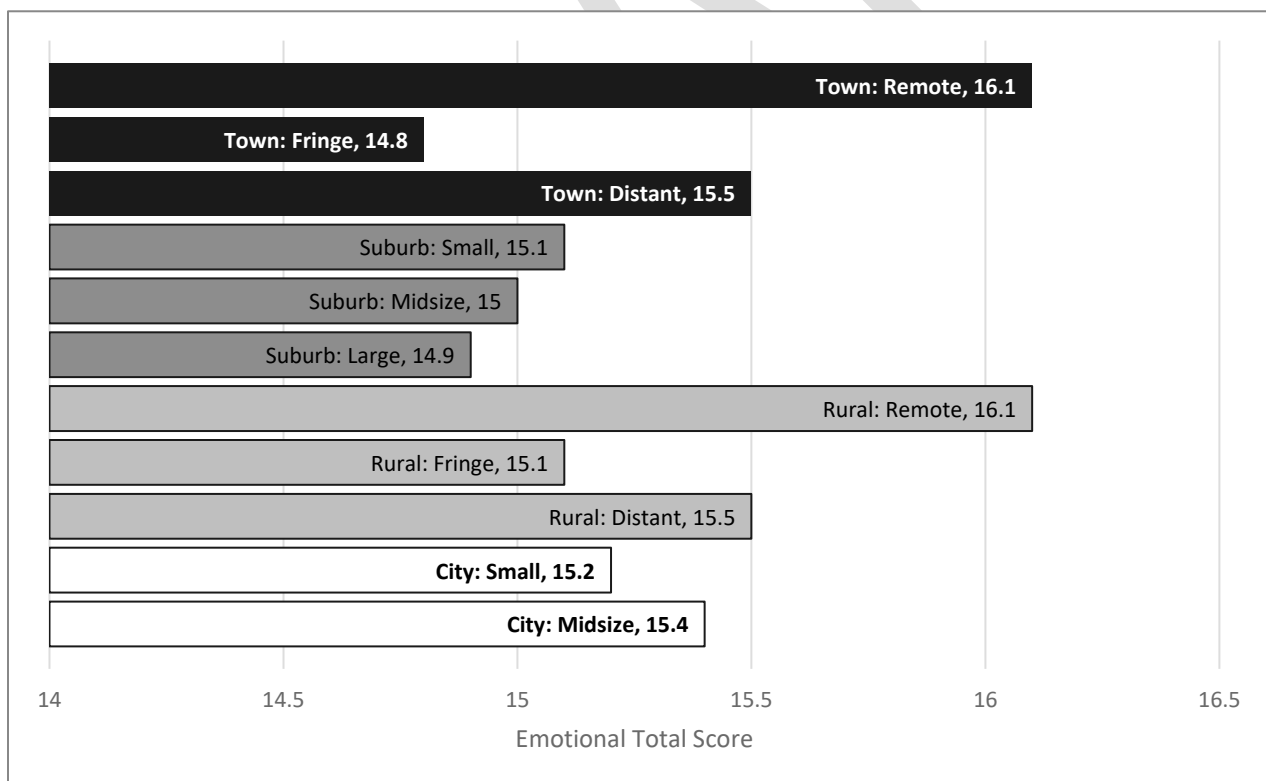


Figure 6. Total Emotional Domain Total Score by Geographic Locale

Domain Classification

Individual students' engagement is classified according to the modal item response within each domain. Specifically, the most frequently occurring engagement type (Disengaged, Compliant, or Committed) within each of the Behavioral, Cognitive, and Emotional domains is used to assign a domain engagement type for each student.

Data from students' completed surveys are reported by grade spans and domain as percentages by engagement type: Committed, Compliant, and Disengaged³. The reported percentages are calculated as the number of respondents in each domain's type of engagement divided by the total number of respondents who completed the survey.

Notable findings include:

- Elementary students had high percentages of Committed responses for Behavioral (65.1%), Cognitive (64.4%), and Emotional (75.8%) domains. Less than 10% of students reported Disengaged responses for Behavioral (4.8%) and Cognitive (3.5%) domains.
- Middle school students' highest percentage of Committed responses were in the Behavioral domain (63.5%). More than half of student responses were Committed in the Cognitive (54.6%) and Emotional (58.7%) domains.
- High school students were classified as Committed evenly across the Behavioral (52.4%), Cognitive (54.6%), and Emotional (53.2%) domains.

Figure 7 depicts how student engagement responses are broken out by grade-span and domains.

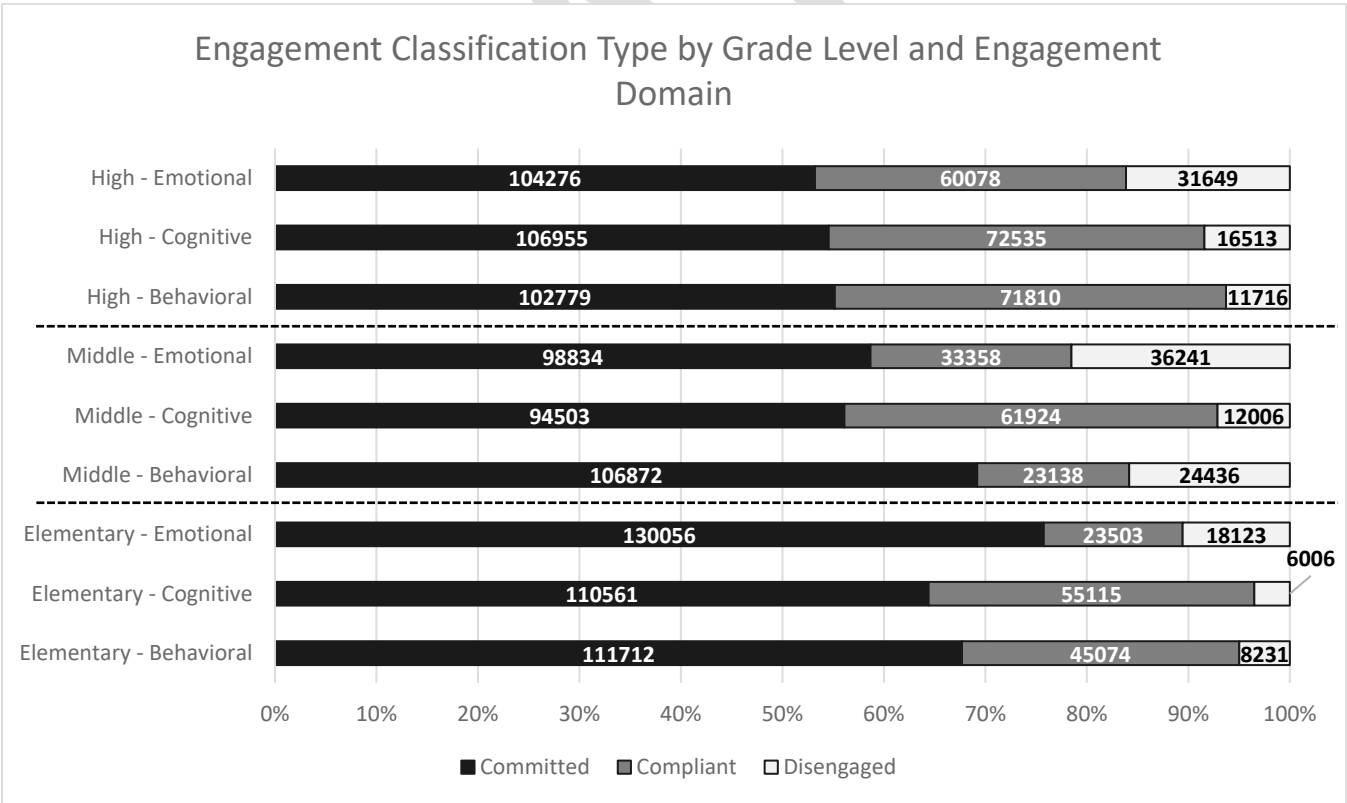


Figure 7. Engagement Classification Type by Grade Span and Engagement Domains

³ Data from the Mixed engagement type in the Behavioral domain are excluded from this section. This engagement type accounts for only 5%-6% of responses and exclusion does not impact overall distributions.

Reliability and Validity Evidence

Internal Consistency Reliability

Survey responses were used to investigate evidence for the internal consistency reliability across the three grade-span versions of the survey. Reliability was calculated according to Cronbach's Alpha (α) and McDonald's omega (ω)⁴. All three versions demonstrate Alpha values of 0.84 and higher, and omega values of 0.89 and higher, approximating 0.85 (see Table 4). These values provide evidence that the SES demonstrates sufficient reliability to make decisions about groups of students⁵.

Grade Span	Domain	Behavioral	Cognitive	Emotional
Elementary School ($\omega = 0.89$, $\alpha = 0.84$)	Behavioral	0.746		
	Cognitive	0.441	0.808	
	Emotional	0.476	0.545	0.872
Middle School ($\omega = 0.92$, $\alpha = 0.85$)	Behavioral	0.824		
	Cognitive	0.620	0.885	
	Emotional	0.566	0.649	0.871
High School ($\omega = 0.92$, $\alpha = 0.85$)	Behavioral	0.798		
	Cognitive	0.581	0.891	
	Emotional	0.542	0.652	0.866

Table 4. Convergent and Discriminant Validity of Domains, by Grade Span

Validity Evidence

Validity evidence for the measurement of Behavioral, Cognitive, and Emotional domains of engagement on the SES is also presented in Table 4, as correlations between domains, within each of the grade-span versions. Specifically, correlations of responses across domains are presented in the off-diagonal cells and represent discriminant validity evidence (indicating the degree to which domains are separate and distinct from one another) while convergent validity evidence is presented in the cells along the diagonal as reliability (i.e., omega; indicating the consistency of measurement within the domain).

Generally, within-domain reliabilities range from 0.80 to 0.83 and the across-domain correlations range from 0.44 to 0.65. Further, the within-domain reliabilities are higher than the across-domain correlations within each domain. These results indicate that the SES consistently measures student engagement within each of the three domains, which are related to each other, but demonstrates sufficient independence as to be considered separate traits or constructs.

⁴ Though Cronbach's Alpha is widely used and understood as a measure of reliability, McDonald's omega is a distinct reliability coefficient with the advantage of considering the strength of association between items, leading to a stronger measurement of the scale's internal consistency.

⁵ Salvia, J., & Ysseldyke, J. E. (2004). *Assessment in special and inclusive education* (9th ed.). Boston: Houghton Mifflin.

Confirmatory Factor Analysis

Additional validity evidence for Cognia's SES is demonstrated using statistical techniques to evaluate the underlying theoretical structure, or latent factor model. The relationship among items, domains (Behavioral, Cognitive, and Emotional), and overall engagement for each grade-span version can be represented according to two latent factor models. The *Unidimensional Model* conceives student performance on items as simply correlated to general engagement; the *First-Order Model* suggests that student performance on each item is correlated with a specific domain and those domains are correlated with each other.

Confirmatory Factor Analysis (CFA) is the statistical technique used to evaluate which of the unidimensional or first-order models fits the data best and to confirm that the target model fits the data well. Model comparison is conducted according to a Likelihood-Ratio Test, with significant differences indicating that the more complex (i.e., first-order) model fits best; model evaluation is conducted by comparing standard model fit statistics (*RMSEA* and χ^2/df) against critical values in an empirical sampling distribution that was generated according to a bootstrap resampling procedure (replications = 100; $\alpha = 0.05$).

Model evaluation found that *RMSEA* and χ^2/df values did not exceed the empirically determined significance values; therefore, the models all fit the data sufficiently well to enable further comparison and interpretation⁶. Model comparison according to the results of Likelihood-Ratio Tests between the unidimensional models and first-order models found in all instances that first-order models fit significantly better than the unidimensional models. Together, these results provide evidence supporting measurement and reporting of Cognia's Student Engagement Survey results according to the Behavioral, Cognitive, and Emotional domains.

Model evaluation and comparison results are summarized by version in Table 5.

Grade-Span	Model	N	df	RMSEA	χ^2/df	Notes
Elementary School	Uni	171,682	170	0.026	116.09	
	First	171,682	167	0.025	111.25	*
Middle School	Uni	168,433	170	0.028	130.67	
	First	168,433	167	0.027	124.99	*
High School	Uni	196,003	170	0.031	197.31	
	First	196,003	167	0.031	196.78	*

* Preferred model based on LRT results

Table 5. Confirmatory Factor Analysis Model Summary, by Grade Span

For Additional Information

Please contact Cognia's Research & Analytics group at research_analytics@cognia.com with additional questions about this study. You may also directly contact the authors:

Tyler Blouin, Associate Research Analyst: tyler.blouin@cognia.org

Matthew Gushta, Ph.D., Director, Research & Analytics: matthew.gushta@cognia.org

⁶ Kline, R. B. (2013). *Beyond significance testing: Statistics reform in the behavioral sciences, 2nd Edition*. Washington, DC: American Psychological Association.

Appendix A

Item Descriptive Statistics

Elementary School (n= 171,682)							
	Mean	SD	Min	Max	Corr w/ Behavioral Total	Corr w/ Cognitive Total	Corr w/ Emotional Total
Q1	3.29	1.30	0	5	0.582	0.292	0.298
Q2	3.34	1.31	0	5	0.564	0.218	0.280
Q3	2.97	1.49	0	5	0.397	0.091	0.066
Q4	3.77	1.48	0	5	0.465	0.207	0.212
Q5	3.10	1.15	1	5	0.462	0.236	0.241
Q6	2.92	1.52	0	5	0.505	0.272	0.316
Q7	2.89	1.15	0	5	0.095	0.356	0.091
Q8	3.29	1.73	0	5	0.315	0.614	0.375
Q9	3.86	1.09	0	5	0.334	0.587	0.399
Q10	3.83	1.31	1	5	0.320	0.521	0.375
Q11	2.39	1.40	1	5	-0.055	0.274	-0.073
Q12	3.03	0.87	0	4	0.248	0.518	0.312
Q13	3.18	1.47	0	4	0.274	0.579	0.396
Q14	1.97	1.61	0	4	0.277	0.294	0.557
Q15	2.75	1.89	0	5	0.341	0.406	0.711
Q16	3.99	1.29	0	5	0.274	0.305	0.548
Q17	2.49	1.34	0	4	0.117	0.150	0.446
Q18	3.92	1.70	0	5	0.383	0.449	0.688
Q19	3.60	1.28	0	5	0.284	0.339	0.550
Q20	2.96	1.08	1	5	0.257	0.259	0.522

Table A1. Elementary School Item Descriptive Statistics

Middle School (n = 168,433)							
	Mean	SD	Min	Max	Corr w/ Behavioral Total	Corr w/ Cognitive Total	Corr w/ Emotional Total
Q1	3.35	1.33	0	5	0.663	0.447	0.400
Q2	3.46	1.29	0	5	0.500	0.255	0.233
Q3	1.83	1.04	0	5	0.484	0.333	0.287
Q4	2.87	2.16	0	5	0.518	0.248	0.250
Q5	3.12	1.15	1	5	0.543	0.340	0.309
Q6	2.76	1.47	0	5	0.586	0.439	0.396
Q7	2.95	1.14	0	5	0.307	0.509	0.317
Q8	2.87	2.01	0	5	0.478	0.738	0.491
Q9	3.71	1.41	0	5	0.398	0.669	0.401
Q10	2.74	1.09	1	5	0.360	0.575	0.360
Q11	3.57	1.02	1	5	0.293	0.488	0.319
Q12	2.92	1.05	0	4	0.387	0.661	0.422
Q13	2.54	1.05	0	4	0.429	0.647	0.476
Q14	2.20	1.35	0	4	0.272	0.314	0.570
Q15	1.73	1.47	0	5	0.314	0.365	0.557
Q16	3.13	1.83	0	5	0.323	0.380	0.594
Q17	1.79	1.32	0	4	0.157	0.181	0.414
Q18	2.98	1.85	0	5	0.490	0.560	0.710
Q19	3.19	1.53	0	5	0.392	0.462	0.594
Q20	3.18	1.32	1	5	0.224	0.223	0.429

Table A2. Middle School Item Descriptive Statistics

High School (n = 196,003)							
	Mean	SD	Min	Max	Corr w/ Behavioral Total	Corr w/ Cognitive Total	Corr w/ Emotional Total
Q1	3.38	1.04	0	5	0.607	0.454	0.427
Q2	2.75	1.46	0	5	0.579	0.303	0.296
Q3	2.86	1.55	0	5	0.531	0.299	0.267
Q4	3.42	1.73	0	5	0.545	0.293	0.279
Q5	3.19	1.20	1	5	0.497	0.256	0.239
Q6	2.78	1.27	0	5	0.442	0.267	0.234
Q7	3.34	1.17	0	5	0.337	0.482	0.306
Q8	3.10	1.70	0	5	0.397	0.716	0.450
Q9	3.29	1.55	0	5	0.398	0.699	0.464
Q10	2.73	1.15	1	5	0.348	0.591	0.383
Q11	3.42	1.18	1	5	0.259	0.470	0.284
Q12	2.76	1.12	0	4	0.371	0.668	0.463
Q13	2.97	1.23	0	4	0.375	0.619	0.419
Q14	2.24	1.45	0	4	0.275	0.292	0.523
Q15	1.25	1.52	0	5	0.197	0.271	0.486
Q16	3.05	1.79	0	5	0.321	0.413	0.616
Q17	1.87	1.45	0	4	0.251	0.324	0.554
Q18	3.19	1.60	0	5	0.441	0.537	0.652
Q19	3.27	1.45	0	5	0.306	0.367	0.516
Q20	3.06	1.42	1	5	0.279	0.278	0.446

Table A3. High School Item Descriptive Statistics

Survey Response Frequencies by Engagement Type

Elementary School Response Count and Frequency (n =171,682)			
	Committed	Compliant	Disengaged
Q1	28579 (16.6%)	67069 (39.1%)	76034 (44.3%)
Q2	27003 (15.7%)	18799 (10.9%)	125880 (73.3%)
Q3	20592 (12.0%)	97651 (56.9%)	53439 (31.1%)
Q4	14206 (8.3%)	31841 (18.5%)	125635 (73.2%)
Q5	10398 (6.1%)	92478 (53.9%)	68806 (40.1%)
Q6	18107 (10.5%)	101328 (59.0%)	52247 (30.4%)
Q7	14856 (8.7%)	124463 (72.5%)	32363 (18.9%)
Q8	32649 (19.0%)	28549 (16.6%)	110484 (64.4%)
Q9	10705 (6.2%)	32208 (18.8%)	128769 (75.0%)
Q10	10931 (6.4%)	59936 (34.9%)	100815 (58.7%)
Q11	69950 (40.7%)	73621 (42.9%)	28111 (16.4%)
Q12	7370 (4.3%)	111369 (64.9%)	52943 (30.8%)
Q13	29288 (17.1%)	21640 (12.6%)	120754 (70.3%)
Q14	71798 (41.8%)	63029 (36.7%)	36855 (21.5%)
Q15	64519 (37.6%)	16992 (9.9%)	90171 (52.5%)
Q16	12462 (7.3%)	17092 (10.0%)	142128 (82.8%)
Q17	62287 (36.3%)	57195 (33.3%)	52200 (30.4%)
Q18	23688 (13.8%)	14881 (8.7%)	133113 (77.5%)
Q19	11703 (6.8%)	46859 (27.3%)	113120 (65.9%)
Q20	12645 (7.4%)	94388 (55.0%)	64649 (37.7%)

Table A4. Elementary School Survey Response Frequencies by Engagement Type

Middle School Response Count and Frequency (n = 168,433)			
	Committed	Compliant	Disengaged
Q1	38535 (22.9%)	4801 (2.9%)	125097 (74.3%)
Q2	21749 (12.9%)	16909 (10.0%)	129775 (77.0%)
Q3	70943 (42.1%)	89181 (52.9%)	8309 (4.9%)
Q4	53260 (31.6%)	29909 (17.8%)	85264 (50.6%)
Q5	18291 (10.9%)	75816 (45.0%)	74326 (44.1%)
Q6	37305 (22.1%)	90781 (53.9%)	40347 (24.0%)
Q7	11413 (6.8%)	106309 (63.1%)	50711 (30.1%)
Q8	59071 (35.1%)	17824 (10.6%)	91538 (54.3%)
Q9	26185 (15.5%)	15256 (9.1%)	126992 (75.4%)
Q10	24776 (14.7%)	100473 (59.7%)	43184 (25.6%)
Q11	5097 (3.0%)	64270 (38.2%)	99066 (58.8%)
Q12	22404 (13.3%)	91099 (54.1%)	54930 (32.6%)
Q13	15823 (9.4%)	108456 (64.4%)	44154 (26.2%)
Q14	60982 (36.2%)	68787 (40.8%)	38664 (23.0%)
Q15	82918 (49.2%)	55340 (32.9%)	30175 (17.9%)
Q16	33294 (19.8%)	38390 (22.8%)	96749 (57.4%)
Q17	104297 (61.9%)	38253 (22.7%)	25883 (15.4%)
Q18	50720 (30.1%)	18841 (11.2%)	98872 (58.7%)
Q19	24284 (14.4%)	44270 (26.3%)	99879 (59.3%)
Q20	14886 (8.8%)	68794 (40.8%)	84753 (50.3%)

Table A5. Middle School Survey Response Frequencies by Engagement Type

High School Response Count and Frequency (n = 196,003)			
	Committed	Compliant	Disengaged
Q1	17934 (9.1%)	78852 (40.2%)	99217 (50.6%)
Q2	35974 (18.4%)	73823 (37.7%)	86206 (44.0%)
Q3	45053 (23.0%)	97311 (49.6%)	53639 (27.4%)
Q4	30651 (15.6%)	50121 (25.6%)	115231 (58.8%)
Q5	23262 (11.9%)	68337 (34.9%)	104404 (53.3%)
Q6	30462 (15.5%)	136176 (69.5%)	29365 (15.0%)
Q7	5413 (2.8%)	115130 (58.7%)	75460 (38.5%)
Q8	64252 (32.8%)	12983 (6.6%)	118768 (60.6%)
Q9	36105 (18.4%)	61429 (31.3%)	98469 (50.2%)
Q10	34388 (17.5%)	107002 (54.6%)	54613 (27.9%)
Q11	11861 (6.1%)	87820 (44.8%)	96322 (49.1%)
Q12	33111 (16.9%)	108317 (55.3%)	54575 (27.8%)
Q13	22953 (11.7%)	74674 (38.1%)	98376 (50.2%)
Q14	58529 (29.9%)	81717 (41.7%)	55757 (28.4%)
Q15	111981 (57.1%)	60537 (30.9%)	23485 (12.0%)
Q16	43371 (22.1%)	40849 (20.8%)	111783 (57.0%)
Q17	104648 (53.4%)	54015 (27.6%)	37340 (19.1%)
Q18	22041 (11.2%)	74692 (38.1%)	99270 (50.6%)
Q19	21808 (11.1%)	58299 (29.7%)	115896 (59.1%)
Q20	19150 (9.8%)	99816 (50.9%)	77037 (39.3%)

Table A6. High School Survey Response Frequencies by Engagement Type

Appendix B: SES Questions

Domain	Position	Elementary School Item Text
Behavioral	01	When I'm in class...
	02	If the classwork is hard to do, I...
	03	Doing the same kind of work every day in class...
	04	Going to an activity after school or at night...
	05	When I use a computer, I...
	06	School rules...
Cognitive	07	As a student...
	08	Choose one you agree with the most.
	09	When do you use what you learn in class?
	10	Before I have a test, I...
	11	When I don't know something, I...
	12	The things I learn in school...
	13	The activities I do in class...
Emotional	14	How do you feel when you say something in front of the class?
	15	At the end of the school day, I feel...
	16	How do you feel about most of your teachers?
	17	What do you like most about your school?
	18	I feel my school work is...
	19	Learning goals...
	20	What makes you feel good as a student?

Table B1. Cognia's Elementary School Student Engagement Survey Item Text

Domain	Position	Middle School Item Text
Behavioral	01	When I'm in class...
	02	If the classwork is hard to do, I...
	03	Doing the same type of activity every day...
	04	Participating in before or after school clubs is...
	05	When I use technology to learn, I...
	06	The rules at my school...
Cognitive	07	Which response best describes how you see yourself as a student?
	08	Which statement do you agree with the most?
	09	How do you use the information you learn in class?
	10	How do you study for a test?
	11	When I don't understand something...
	12	My classes are teaching me skills that...
	13	The activities I do in class...
Emotional	14	How do you feel when you say something in front of the class?
	15	Which response best describes how you feel at the end of the school day?
	16	Which of the following statements best describes your relationship with your teachers?
	17	What do you enjoy most about your school?
	18	When I think about my school work...
	19	Having personal learning goals...
	20	Success to me is...

Table B2. Cogna's Middle School Student Engagement Survey Item Text

Domain	Position	High School Item Text
Behavioral	01	When I'm in class...
	02	Challenging learning activities make me...
	03	When teachers change their method of instruction...
	04	Participating in extracurricular activities is...
	05	The use of technology...
	06	School rules...
Cognitive	07	Which response best describes how you see yourself as a student?
	08	Which statement do you agree with the most?
	09	In what ways do you use the information you learn in class?
	10	The way I prepare for a test is by...
	11	When I struggle with a lesson...
	12	The skills I am learning in class...
	13	Classroom activities...
Emotional	14	How do you feel when you are voicing your opinion in class?
	15	Which response best describes how you feel at the end of the school day?
	16	Which of the following statements best describes your relationship with most of your teachers?
	17	What do you enjoy most about your school?
	18	When thinking about my school work...
	19	Developing personal learning goals...
	20	School success to me is...

Table B3. Cognia's High School Student Engagement Survey Item Text

Appendix C: NCES Geographic Locale Descriptions

Geographic Locale	Classification Description
City – Large	Territory inside an Urbanized Area and inside a Principal City with population of 250,000 or more.
City – Midsize	Territory inside an Urbanized Area and inside a Principal City with population less than 250,000 and greater than or equal to 100,000.
City – Small	Territory inside an Urbanized Area and inside a Principal City with population less than 100,000.
Suburban – Large	Territory outside a Principal City and inside an Urbanized Area with population of 250,000 or more.
Suburban – Midsize	Territory outside a Principal City and inside an Urbanized Area with population less than 250,000 and greater than or equal to 100,000.
Suburban – Small	Territory outside a Principal City and inside an Urbanized Area with population less than 100,000.
Town – Fringe	Territory inside an Urban Cluster that is less than or equal to 10 miles from an Urbanized Area.
Town – Distant	Territory inside an Urban Cluster that is more than 10 miles and less than or equal to 35 miles from an Urbanized Area.
Town – Remote	Territory inside an Urban Cluster that is more than 35 miles from an Urbanized Area.
Rural – Fringe	Census-defined rural territory that is less than or equal to 5 miles from an Urbanized Area, as well as rural territory that is less than or equal to 2.5 miles from an Urban Cluster.
Rural – Distant	Census-defined rural territory that is more than 5 miles but less than or equal to 25 miles from an Urbanized Area, as well as rural territory that is more than 2.5 miles but less than or equal to 10 miles from an Urban Cluster.
Rural – Remote	Census-defined rural territory that is more than 25 miles from an Urbanized Area and also more than 10 miles from an Urban Cluster.

Source: https://nces.ed.gov/programs/edge/docs/LOCALE_DEFINITIONS.pdf

Table C1. Geographic Locale Classifications and Criteria



Appendix D: Participating Districts and Schools

District Code	District Name	School Code	School Name
0000	State Schools of South Carolina	5364001	South Carolina Governor's School for the Arts & Humanities
0000	South Carolina Department of Education	5395001	Governor's School for Science and Mathematics
0160	Abbeville County School District	0160001	Abbeville High School
0160	Abbeville County School District	0160003	Dixie High School
0160	Abbeville County School District	0160007	John C. Calhoun Elementary School
0160	Abbeville County School District	0160016	J. S. Wright Middle School
0160	Abbeville County School District	0160017	Westwood Elementary School
0160	Abbeville County School District	0160018	Cherokee Trail Elementary School
0160	Abbeville County School District	0160019	Diamond Hill Elementary School
0201	Aiken County School District	0201001	Silver Bluff High School
0201	Aiken County School District	0201002	Aiken High School
0201	Aiken County School District	0201003	South Aiken High School
0201	Aiken County School District	0201005	Jefferson Elementary School
0201	Aiken County School District	0201006	Midland Valley High School
0201	Aiken County School District	0201007	Paul Knox Middle School
0201	Aiken County School District	0201008	Langley-Bath-Clearwater Middle School
0201	Aiken County School District	0201009	Leavelle McCampbell Middle School
0201	Aiken County School District	0201010	New Ellenton Middle School
0201	Aiken County School District	0201011	North Augusta Middle School
0201	Aiken County School District	0201012	North Augusta High School
0201	Aiken County School District	0201015	Wagener-Salley High School
0201	Aiken County School District	0201016	Aiken Elementary School
0201	Aiken County School District	0201017	M. B. Kennedy Middle School
0201	Aiken County School District	0201019	Belvedere Elementary School
0201	Aiken County School District	0201021	Byrd Elementary School
0201	Aiken County School District	0201022	J. D. Lever Elementary School
0201	Aiken County School District	0201024	Clearwater Elementary School
0201	Aiken County School District	0201027	East Aiken School of the Arts
0201	Aiken County School District	0201028	Schofield Middle School
0201	Aiken County School District	0201029	Gloverville Elementary School
0201	Aiken County School District	0201030	Greendale Elementary School
0201	Aiken County School District	0201031	Hammond Hill Elementary School
0201	Aiken County School District	0201033	Jackson STEM Magnet Middle School
0201	Aiken County School District	0201035	Millbrook Elementary School
0201	Aiken County School District	0201038	North Aiken Elementary School
0201	Aiken County School District	0201039	North Augusta Elementary School
0201	Aiken County School District	0201051	Cyril B. Busbee Elementary

District Code	District Name	School Code	School Name
0201	Aiken County School District	0201052	Warrenville Elementary School
0201	Aiken County School District	0201054	Oakwood/Windsor Elementary School
0201	Aiken County School District	0201055	Redcliffe Elementary School
0201	Aiken County School District	0201056	Chukker Creek Elementary School
0201	Aiken County School District	0201057	Aiken Middle School
0201	Aiken County School District	0201058	Mossy Creek Elementary School
0201	Aiken County School District	0201059	Ridge Spring - Monetta Elementary School
0201	Aiken County School District	0201060	Ridge Spring - Monetta High School
0201	Aiken County School District	0201061	Aiken Scholars Academy
0201	Aiken County School District	0201062	Ridge Spring - Monetta Middle
0201	Aiken County School District	0201063	A. L. Corbett Middle School
0201	Aiken County School District	0201601	Lloyd-Kennedy Charter
0201	Aiken County School District	0201602	Horse Creek Academy
0201	Aiken County School District	0201603	Aiken Performing Arts Charter
0301	Allendale County Schools	0301001	Allendale-Fairfax High School
0301	Allendale County Schools	0301004	Allendale Elementary School
0301	Allendale County Schools	0301008	Allendale-Fairfax Middle School
0401	Anderson School District #1	0401001	Palmetto High School
0401	Anderson School District #1	0401002	Powdersville High School
0401	Anderson School District #1	0401003	Wren High School
0401	Anderson School District #1	0401004	Palmetto Elementary School
0401	Anderson School District #1	0401005	Cedar Grove Elementary School
0401	Anderson School District #1	0401008	Wren Middle School
0401	Anderson School District #1	0401009	West Pelzer Elementary School
0401	Anderson School District #1	0401011	Spearman Elementary School
0401	Anderson School District #1	0401012	Palmetto Middle School
0401	Anderson School District #1	0401013	Wren Elementary School
0401	Anderson School District #1	0401014	Hunt Meadows Elementary School
0401	Anderson School District #1	0401061	Powdersville Middle School
0401	Anderson School District #1	0401062	Powdersville Elementary School
0402	Anderson School District #2	0402012	Belton-Honea Path High School
0402	Anderson School District #2	0402013	Belton Elementary School
0402	Anderson School District #2	0402014	Belton Middle School
0402	Anderson School District #2	0402018	Honea Path Elementary School
0402	Anderson School District #2	0402019	Honea Path Middle School
0402	Anderson School District #2	0402021	Wright Elementary School
0403	Anderson School District #3	0403022	Crescent High School
0403	Anderson School District #3	0403024	Iva Elementary School
0403	Anderson School District #3	0403025	Starr-Iva Middle School
0403	Anderson School District #3	0403026	Starr Elementary School
0403	Anderson School District #3	0403027	Flat Rock Elementary
0404	Anderson School District #4	0404027	Pendleton High School
0404	Anderson School District #4	0404029	Riverside Middle School
0404	Anderson School District #4	0404031	La France Elementary School

District Code	District Name	School Code	School Name
0404	Anderson School District #4	0404034	Pendleton Elementary School
0404	Anderson School District #4	0404036	Townville Elementary School
0404	Anderson School District #4	0404037	Mount Lebanon Elementary School
0405	Anderson School District Five	0405038	T.L. Hanna High School
0405	Anderson School District Five	0405040	McCants Middle School
0405	Anderson School District Five	0405044	Centerville Elementary
0405	Anderson School District Five	0405045	Concord Elementary
0405	Anderson School District Five	0405048	Westside High School
0405	Anderson School District Five	0405050	Nevitt Forest Elementary
0405	Anderson School District Five	0405051	New Prospect Elementary
0405	Anderson School District Five	0405055	Varennes Elementary
0405	Anderson School District Five	0405059	Whitehall Elementary
0405	Anderson School District Five	0405060	Calhoun Academy of the Arts
0405	Anderson School District Five	0405061	Midway Elementary
0405	Anderson School District Five	0405062	McLees Elementary
0405	Anderson School District Five	0405063	Robert Anderson Middle School
0405	Anderson School District Five	0405064	Glenview Middle School
0405	Anderson School District Five	0405065	Southwood Academy of the Arts
0405	Anderson School District Five	0405066	North Pointe Elementary
0405	Anderson School District Five	0405601	Anderson Five Charter School
0501	Bamberg 01	0501001	Bamberg - Ehrhardt High
0501	Bamberg 01	0501002	Bamberg - Ehrhardt Middle
0501	Bamberg 01	0501006	Richard Carroll Elementary
0502	Bamberg School District Two	0502007	Denmark Olar High School
0502	Bamberg School District Two	0502008	Denmark Olar Middle School
0502	Bamberg School District Two	0502010	Denmark Olar Elementary School
0619	Barnwell County School District #19	0619001	Blackville-Hilda High School
0619	Barnwell County School District #19	0619003	Macedonia Elementary School
0629	Williston School District, Barnwell County 29	0629006	Williston-Elko High School
0629	Williston School District, Barnwell County 29	0629007	Kelly Edwards Elementary School
0629	Williston School District, Barnwell County 29	0629008	Williston-Elko Middle School
0645	Barnwell County School District #45	0645009	Barnwell High School
0645	Barnwell County School District #45	0645010	Guinyard-Butler Middle School
0645	Barnwell County School District #45	0645011	Barnwell Primary School
0645	Barnwell County School District #45	0645012	Barnwell Elementary School
0701	Beaufort County School District	0701001	Lady's Island Middle School
0701	Beaufort County School District	0701002	Beaufort High School
0701	Beaufort County School District	0701003	Hilton Head Island High School
0701	Beaufort County School District	0701004	Battery Creek High School
0701	Beaufort County School District	0701008	Beaufort Elementary School
0701	Beaufort County School District	0701009	Hilton Head Island Middle School

District Code	District Name	School Code	School Name
0701	Beaufort County School District	0701010	Broad River Elementary School
0701	Beaufort County School District	0701014	Lady s Island Elementary
0701	Beaufort County School District	0701015	Mossy Oaks Elementary School
0701	Beaufort County School District	0701016	Port Royal Elementary School
0701	Beaufort County School District	0701017	M C Riley
0701	Beaufort County School District	0701020	Saint Helena Elementary School
0701	Beaufort County School District	0701022	Joseph S. Shanklin Elementary
0701	Beaufort County School District	0701023	Whale Branch Elementary School
0701	Beaufort County School District	0701024	Bluffton Elementary
0701	Beaufort County School District	0701025	Coosa Elementary School
0701	Beaufort County School District	0701026	H. E. McCracken Middle School
0701	Beaufort County School District	0701027	Whale Branch Middle School
0701	Beaufort County School District	0701028	Beaufort Middle School
0701	Beaufort County School District	0701029	Okatie Elementary School
0701	Beaufort County School District	0701030	Bluffton High School
0701	Beaufort County School District	0701032	Hilton Head Island School for the Creative Arts
0701	Beaufort County School District	0701033	Hilton Head IB Elementary
0701	Beaufort County School District	0701034	Red Cedar Elementary School
0701	Beaufort County School District	0701035	Bluffton Middle School
0701	Beaufort County School District	0701036	Whale Branch Early College High School
0701	Beaufort County School District	0701037	Pritchardville Elementary School
0701	Beaufort County School District	0701038	River Ridge Academy
0701	Beaufort County School District	0701039	May River High School
0701	Beaufort County School District	0701040	Robert Smalls International Academy
0701	Beaufort County School District	0701601	Riverview Charter School
0801	Berkeley County School District	0801001	Stratford High School
0801	Berkeley County School District	0801002	Berkeley High School
0801	Berkeley County School District	0801006	Cross High School
0801	Berkeley County School District	0801007	Goose Creek High School
0801	Berkeley County School District	0801008	Hanahan High School
0801	Berkeley County School District	0801012	Berkeley Middle School
0801	Berkeley County School District	0801014	Boulder Bluff Elementary School
0801	Berkeley County School District	0801015	Cainhoy Elementary/Middle School
0801	Berkeley County School District	0801016	Cross Elementary School
0801	Berkeley County School District	0801017	College Park Elementary School
0801	Berkeley County School District	0801020	J.K. Gourdin Elementary
0801	Berkeley County School District	0801021	Hanahan Middle School
0801	Berkeley County School District	0801022	Westview Middle School
0801	Berkeley County School District	0801024	Bonner Elementary School
0801	Berkeley County School District	0801027	Sedgefield Middle School
0801	Berkeley County School District	0801028	Saint Stephen Elementary School
0801	Berkeley County School District	0801029	St. Stephen Middle School
0801	Berkeley County School District	0801030	Whitesville Elementary School
0801	Berkeley County School District	0801031	Westview Elementary School

District Code	District Name	School Code	School Name
0801	Berkeley County School District	0801032	College Park Middle School
0801	Berkeley County School District	0801033	Marrington Elementary
0801	Berkeley County School District	0801034	Marrington Middle School
0801	Berkeley County School District	0801036	Howe Hall AIMS
0801	Berkeley County School District	0801037	Macedonia Middle School
0801	Berkeley County School District	0801038	Sangaree Intermediate School
0801	Berkeley County School District	0801039	Devon Forest Elementary School
0801	Berkeley County School District	0801040	Mount Holly Elementary
0801	Berkeley County School District	0801041	Berkeley Intermediate School
0801	Berkeley County School District	0801043	Timberland High School
0801	Berkeley County School District	0801044	Hanahan Elementary School
0801	Berkeley County School District	0801046	Goose Creek Primary School
0801	Berkeley County School District	0801047	Sangaree Middle School
0801	Berkeley County School District	0801048	Daniel Island School
0801	Berkeley County School District	0801049	Cane Bay High
0801	Berkeley County School District	0801050	Cane Bay Elementary
0801	Berkeley County School District	0801051	Berkeley Middle College High School
0801	Berkeley County School District	0801052	Cane Bay Middle School
0801	Berkeley County School District	0801053	Nexton Elementary School
0801	Berkeley County School District	0801054	Philip Simmons Elementary School
0801	Berkeley County School District	0801055	Philip Simmons Middle School
0801	Berkeley County School District	0801056	Philip Simmons High School
0801	Berkeley County School District	0801057	Bowen's Corner Elementary
0801	Berkeley County School District	0801058	Foxbank Elementary
0901	Calhoun County School District	0901001	Calhoun County High School
0901	Calhoun County School District	0901008	Sandy Run K-8
0901	Calhoun County School District	0901009	Saint Matthews K-8
1001	Charleston County School District	1001001	Baptist Hill Middle-High School
1001	Charleston County School District	1001002	North Charleston High School
1001	Charleston County School District	1001008	Garrett Academy of Technology
1001	Charleston County School District	1001010	Burke High School
1001	Charleston County School District	1001014	Wando High School
1001	Charleston County School District	1001018	Military Magnet Academy
1001	Charleston County School District	1001020	St. John's High School
1001	Charleston County School District	1001022	R.B. Stall High School
1001	Charleston County School District	1001030	Northwoods Middle School
1001	Charleston County School District	1001033	Chicora School of Communications
1001	Charleston County School District	1001036	A. C. Corcoran Elementary School
1001	Charleston County School District	1001038	Edmund A. Burns Elementary School
1001	Charleston County School District	1001039	Jane Edwards Elementary School
1001	Charleston County School District	1001040	Mary Ford Elementary
1001	Charleston County School District	1001042	W. B. Goodwin Elementary School
1001	Charleston County School District	1001043	Harbor View Elementary School
1001	Charleston County School District	1001044	Haut Gap Middle School

District Code	District Name	School Code	School Name
1001	Charleston County School District	1001045	Minnie Hughes Elementary
1001	Charleston County School District	1001046	Hunley Park Elementary School
1001	Charleston County School District	1001050	Ladson Elementary
1001	Charleston County School District	1001051	Laing Middle School of Science & Technology
1001	Charleston County School District	1001052	Lambs Elementary School
1001	Charleston County School District	1001056	Saint James-Santee Elementary
1001	Charleston County School District	1001057	Memminger Elementary
1001	Charleston County School District	1001059	E.B. Ellington Elementary
1001	Charleston County School District	1001060	Mitchell Math & Science Elementary
1001	Charleston County School District	1001061	Jennie Moore Elementary for the Creative Arts
1001	Charleston County School District	1001062	Morningside Middle School
1001	Charleston County School District	1001063	Mount Pleasant Academy
1001	Charleston County School District	1001065	Moultrie Middle School
1001	Charleston County School District	1001066	Murray LaSaine Elementary
1001	Charleston County School District	1001067	North Charleston Elementary School
1001	Charleston County School District	1001068	Oakland Elementary School
1001	Charleston County School District	1001070	MC Hursey Elementary
1001	Charleston County School District	1001072	Matilda F. Dunston Elementary School
1001	Charleston County School District	1001075	Edith L. Frierson School of Technology
1001	Charleston County School District	1001076	Sanders-Clyde Elementary/Middle School
1001	Charleston County School District	1001077	Pepperhill Elementary School
1001	Charleston County School District	1001079	James Simons Elementary
1001	Charleston County School District	1001081	Springfield Elementary School
1001	Charleston County School District	1001082	Saint Andrews School of Math and Science
1001	Charleston County School District	1001083	Angel Oak Elementary
1001	Charleston County School District	1001084	Stiles Point Elementary
1001	Charleston County School District	1001085	Stono Park Elementary School
1001	Charleston County School District	1001086	Sullivan's Island Elementary
1001	Charleston County School District	1001090	Whitesides Elementary
1001	Charleston County School District	1001091	Ashley River Creative Arts Elementary School
1001	Charleston County School District	1001092	C.E. Williams Middle School for Creative and Scientific Arts
1001	Charleston County School District	1001093	James B. Edwards Elementary
1001	Charleston County School District	1001094	Buist Academy for Advanced Studies
1001	Charleston County School District	1001095	Mount Zion Elementary
1001	Charleston County School District	1001096	Belle Hall Elementary
1001	Charleston County School District	1001098	Charleston County School of the Arts
1001	Charleston County School District	1001099	Academic Magnet High School
1001	Charleston County School District	1001101	Charleston Progressive Academy
1001	Charleston County School District	1001102	Charles Pinckney Elementary
1001	Charleston County School District	1001103	Thomas C. Cario Middle School
1001	Charleston County School District	1001104	West Ashley High School
1001	Charleston County School District	1001106	West Ashley Middle School-Advanced Studies Magnet

District Code	District Name	School Code	School Name
1001	Charleston County School District	1001107	James Island Elementary
1001	Charleston County School District	1001109	Drayton Hall Elementary School
1001	Charleston County School District	1001111	Jerry Zucker Middle School of Science
1001	Charleston County School District	1001112	Pinehurst Elementary School
1001	Charleston County School District	1001113	Montessori Community School
1001	Charleston County School District	1001114	North Charleston Creative Arts Elementary School
1001	Charleston County School District	1001115	Simmons-Pinckey Middle School
1001	Charleston County School District	1001116	Deer Park Middle School
1001	Charleston County School District	1001117	Carolina Park Elementary School
1001	Charleston County School District	1001118	Camp Road Middle School
1001	Charleston County School District	1001200	Meeting Street Elementary at Brentwood
1001	Charleston County School District	1001612	Charleston Development Academy
1001	Charleston County School District	1001614	East Cooper Montessori Charter
1001	Charleston County School District	1001615	Greg Mathis Charter
1001	Charleston County School District	1001616	James Island Charter High School
1001	Charleston County School District	1001618	Orange Grove Elementary Charter
1001	Charleston County School District	1001620	Charleston Charter School for Math and Science
1001	Charleston County School District	1001629	Carolina Voyager Charter
1001	Charleston County School District	1001630	Allegro Charter School of Music
1001	Charleston County School District	1001631	Prestige Preparatory Academy
1101	Cherokee County School District #1	1101001	Blacksburg High School
1101	Cherokee County School District #1	1101002	John E. Ewing Middle School
1101	Cherokee County School District #1	1101003	Gaffney High School
1101	Cherokee County School District #1	1101004	Granard Middle School
1101	Cherokee County School District #1	1101005	Alma Elementary School
1101	Cherokee County School District #1	1101007	Blacksburg Middle School
1101	Cherokee County School District #1	1101009	Corinth Elementary School
1101	Cherokee County School District #1	1101010	Draytonville Elementary School
1101	Cherokee County School District #1	1101011	Mary Bramlett Elementary School
1101	Cherokee County School District #1	1101012	Goucher Elementary School
1101	Cherokee County School District #1	1101015	B. D. Lee Elementary School
1101	Cherokee County School District #1	1101019	Luther L. Vaughan Elementary School
1101	Cherokee County School District #1	1101020	Blacksburg Elementary School
1101	Cherokee County School District #1	1101021	Limestone Central Elementary School
1101	Cherokee County School District #1	1101022	Grassy Pond Elementary School
1101	Cherokee County School District #1	1101023	Northwest Elementary School
1101	Cherokee County School District #1	1101024	Gaffney Middle School
1201	Chester County School District	1201002	Chester Senior High School
1201	Chester County School District	1201004	Chester Middle School
1201	Chester County School District	1201005	Great Falls Complex
1201	Chester County School District	1201006	Lewisville High School
1201	Chester County School District	1201008	Lewisville Middle School

District Code	District Name	School Code	School Name
1201	Chester County School District	1201011	Great Falls Elementary School
1201	Chester County School District	1201014	Lewisville Elementary School
1201	Chester County School District	1201018	Chester Park Elementary School of Inquiry
1201	Chester County School District	1201020	Chester Park Elementary School of the Arts
1201	Chester County School District	1201021	Chester Park Center of Literacy Through Technology
1201	Chester County School District	1201601	Academy for Teaching and Learning K-8
1301	Chesterfield County School District	1301001	Cheraw High School
1301	Chesterfield County School District	1301002	Chesterfield High School
1301	Chesterfield County School District	1301005	Long Middle School
1301	Chesterfield County School District	1301006	McBee High School
1301	Chesterfield County School District	1301007	Central High School
1301	Chesterfield County School District	1301008	New Heights Middle School
1301	Chesterfield County School District	1301014	Edwards Elementary School
1301	Chesterfield County School District	1301015	Jefferson Elementary School
1301	Chesterfield County School District	1301020	McBee Elementary School
1301	Chesterfield County School District	1301021	Plainview Elementary School
1301	Chesterfield County School District	1301023	Ruby Elementary School
1301	Chesterfield County School District	1301026	Cheraw Intermediate School
1301	Chesterfield County School District	1301027	Pageland Elementary School
1301	Chesterfield County School District	1301028	Chesterfield-Ruby Middle School
1401	Clarendon County School District #1	1401001	Scott's Branch High School
1401	Clarendon County School District #1	1401005	St. Paul Elementary
1401	Clarendon County School District #1	1401020	Scott's Branch Middle
1402	Clarendon County School District #2	1402007	Manning High School
1402	Clarendon County School District #2	1402011	Manning Junior High School
1402	Clarendon County School District #2	1402012	Manning Primary School
1402	Clarendon County School District #2	1402013	Manning Elementary School
1402	Clarendon County School District #2	1402610	Phoenix Charter High School
1403	Clarendon County School District Three	1403016	East Clarendon Middle/High School
1403	Clarendon County School District Three	1403019	Walker-Gamble Elementary School
1501	Colleton County School District	1501005	Colleton County High School
1501	Colleton County School District	1501006	Bells Elementary
1501	Colleton County School District	1501011	Cottageville Elementary
1501	Colleton County School District	1501012	Forest Hills Elementary
1501	Colleton County School District	1501020	Northside Elementary
1501	Colleton County School District	1501021	Hendersonville Elementary
1501	Colleton County School District	1501022	Colleton County Middle School
1601	Darlington County School District	1601004	Hartsville Middle School
1601	Darlington County School District	1601005	Hartsville High School
1601	Darlington County School District	1601006	Lamar High School
1601	Darlington County School District	1601010	Spaulding Middle School

District Code	District Name	School Code	School Name
1601	Darlington County School District	1601013	Brockington Elementary Magnet School
1601	Darlington County School District	1601015	Carolina Elementary School
1601	Darlington County School District	1601017	North Hartsville Elementary School
1601	Darlington County School District	1601020	Rosenwald Elementary / Middle School
1601	Darlington County School District	1601023	Spaulding Elementary School
1601	Darlington County School District	1601024	Brunson-Dargan Elementary School
1601	Darlington County School District	1601026	Saint John's Elementary School
1601	Darlington County School District	1601027	Thornwell School for the Arts
1601	Darlington County School District	1601028	West Hartsville Elementary School
1601	Darlington County School District	1601029	Washington Street Elementary School
1601	Darlington County School District	1601030	Darlington High School
1601	Darlington County School District	1601031	Darlington Middle School
1601	Darlington County School District	1601033	Mayo High School for Math, Science and Technology
1703	Dillon County School District 3	1703019	Latta High School
1703	Dillon County School District 3	1703021	Latta Middle School
1703	Dillon County School District 3	1703024	Latta Elementary School
1704	Dillon School District Four	1704002	Lake View High School
1704	Dillon School District Four	1704003	Lake View Elementary School
1704	Dillon School District Four	1704005	Dillon High School
1704	Dillon School District Four	1704007	East Elementary School
1704	Dillon School District Four	1704008	South Elementary School
1704	Dillon School District Four	1704009	Gordon Elementary School
1704	Dillon School District Four	1704010	Dillon Middle School
1704	Dillon School District Four	1704011	Stewart Heights Elementary School
1802	Dorchester County School District #2	1802006	Summerville High School
1802	Dorchester County School District #2	1802007	Knightsville Elementary School
1802	Dorchester County School District #2	1802009	Summerville Elementary School
1802	Dorchester County School District #2	1802010	Spann Elementary School
1802	Dorchester County School District #2	1802011	Alston Middle School
1802	Dorchester County School District #2	1802012	R. H. Rollings School of the Arts
1802	Dorchester County School District #2	1802013	Newington Elementary School
1802	Dorchester County School District #2	1802014	Flowertown Elementary School
1802	Dorchester County School District #2	1802016	Charles B. Dubose Middle School
1802	Dorchester County School District #2	1802017	Oakbrook Elementary School
1802	Dorchester County School District #2	1802018	Oakbrook Middle School
1802	Dorchester County School District #2	1802019	Windsor Hill Elementary School
1802	Dorchester County School District #2	1802020	Fort Dorchester High School
1802	Dorchester County School District #2	1802021	Beech Hill Elementary School
1802	Dorchester County School District #2	1802022	Gregg Middle School
1802	Dorchester County School District #2	1802023	Fort Dorchester Elementary School
1802	Dorchester County School District #2	1802024	Eagle Nest Elementary
1802	Dorchester County School District #2	1802025	William Reeves Jr. Elementary
1802	Dorchester County School District #2	1802026	River Oaks Middle

District Code	District Name	School Code	School Name
1802	Dorchester County School District #2	1802027	Ashley Ridge High School
1802	Dorchester County School District #2	1802028	Joseph R. Pye Elementary
1802	Dorchester County School District #2	1802029	Sand Hill Elementary School
1802	Dorchester County School District #2	1802030	Dr Eugene Sires Elementary
1802	Dorchester County School District #2	1802031	Alston-Bailey Elementary School
1804	Dorchester County School District #4	1804016	Harleyville Elementary School
1804	Dorchester County School District #4	1804017	Saint George Middle School
1804	Dorchester County School District #4	1804018	Williams Memorial Elementary School
1804	Dorchester County School District #4	1804019	Woodland High School
1804	Dorchester County School District #4	1804021	Clay Hill Elementary
1804	Dorchester County School District #4	1804022	Harleyville Ridgeville Middle School
1901	Edgefield County School District	1901002	Strom Thurmond High School
1901	Edgefield County School District	1901003	Douglas Elementary School
1901	Edgefield County School District	1901005	Johnston Elementary School
1901	Edgefield County School District	1901007	W. E. Parker Elementary School
1901	Edgefield County School District	1901008	Merriwether Elementary School
1901	Edgefield County School District	1901009	Johnston-Edgefield-Trenton Middle School
1901	Edgefield County School District	1901010	Merriwether Middle School
2001	Fairfield County School District	2001001	Fairfield Middle School
2001	Fairfield County School District	2001008	Kelly Miller Elementary School
2001	Fairfield County School District	2001009	McCrorey-Liston School of Technology
2001	Fairfield County School District	2001012	Geiger Elementary School
2001	Fairfield County School District	2001013	Fairfield Central High School
2001	Fairfield County School District	2001014	Fairfield Elementary School
2001	Fairfield County School District	2001015	Fairfield Magnet School for Mathematics and Science
2101	Florence School District #1	2101002	John W. Moore Intermediate
2101	Florence School District #1	2101004	South Florence High School
2101	Florence School District #1	2101005	Williams Middle School
2101	Florence School District #1	2101006	Wilson High School
2101	Florence School District #1	2101008	Briggs Elementary School
2101	Florence School District #1	2101009	Carver Elementary School
2101	Florence School District #1	2101010	Delmae Heights Elementary School
2101	Florence School District #1	2101011	Greenwood Elementary School
2101	Florence School District #1	2101012	McLaurin Elementary School
2101	Florence School District #1	2101013	Theodore Lester Elementary School
2101	Florence School District #1	2101014	West Florence High School
2101	Florence School District #1	2101016	North Vista Elementary School
2101	Florence School District #1	2101017	Royall Elementary School
2101	Florence School District #1	2101018	Savannah Grove Elementary School
2101	Florence School District #1	2101019	Dewey L. Carter Elementary School
2101	Florence School District #1	2101020	Henry Timrod Elementary School
2101	Florence School District #1	2101021	Wallace-Gregg Elementary School
2101	Florence School District #1	2101022	Southside Middle School

District Code	District Name	School Code	School Name
2101	Florence School District #1	2101050	Sneed Middle School
2101	Florence School District #1	2101051	Lucy T. Davis
2101	Florence School District #1	2101600	Palmetto Youth Academy Charter
2102	Florence County School District #2	2102024	Hannah Pamplico High School
2102	Florence County School District #2	2102028	Hannah-Pamplico Elementary/Middle School
2103	Florence School District #3	2103029	Lake City Comprehensive High School
2103	Florence School District #3	2103036	J. C. Lynch Elementary School
2103	Florence School District #3	2103037	Olanta Elementary School
2103	Florence School District #3	2103039	Scranton Elementary School
2103	Florence School District #3	2103051	Main Street Elementary School
2103	Florence School District #3	2103053	Ronald E. McNair Junior High School
2103	Florence School District #3	2103054	J. Paul Truluck Intermediate School
2104	Florence County School District 4	2104041	Timmonsville High School
2104	Florence County School District 4	2104042	Johnson Middle School
2104	Florence County School District 4	2104043	Brockington Elementary School
2105	Florence County School District #5	2105045	Johnsonville High School
2105	Florence County School District #5	2105047	Johnsonville Elementary School
2105	Florence County School District #5	2105049	Johnsonville Middle School
2201	Georgetown County School District	2201001	Andrews High School
2201	Georgetown County School District	2201004	Georgetown High School
2201	Georgetown County School District	2201008	Andrews Elementary School
2201	Georgetown County School District	2201009	Brown's Ferry Elementary School
2201	Georgetown County School District	2201012	Pleasant Hill Elementary School
2201	Georgetown County School District	2201013	Georgetown Middle School
2201	Georgetown County School District	2201014	Kensington Elementary School
2201	Georgetown County School District	2201015	Maryville Elementary School
2201	Georgetown County School District	2201016	McDonald Elementary School
2201	Georgetown County School District	2201020	Plantersville Elementary School
2201	Georgetown County School District	2201022	Rosemary Middle School
2201	Georgetown County School District	2201023	Sampit Elementary School
2201	Georgetown County School District	2201024	Waccamaw Elementary School
2201	Georgetown County School District	2201025	Waccamaw High School
2201	Georgetown County School District	2201026	Carvers Bay High School
2201	Georgetown County School District	2201027	Carver's Bay Middle School
2201	Georgetown County School District	2201028	Waccamaw Middle School
2201	Georgetown County School District	2201029	Waccamaw Intermediate School
2201	Georgetown County School District	2201601	Coastal Montessori Charter School
2301	Greenville County Schools	2301002	Berea High School
2301	Greenville County Schools	2301003	Blue Ridge High School
2301	Greenville County Schools	2301005	Carolina High School and Academy
2301	Greenville County Schools	2301006	Eastside High School
2301	Greenville County Schools	2301008	Greenville High School
2301	Greenville County Schools	2301009	Greer High School
2301	Greenville County Schools	2301010	Wade Hampton High School

District Code	District Name	School Code	School Name
2301	Greenville County Schools	2301011	Hillcrest Middle School
2301	Greenville County Schools	2301012	Hillcrest High School
2301	Greenville County Schools	2301013	James L. Mann High School Academy
2301	Greenville County Schools	2301014	Mauldin High School
2301	Greenville County Schools	2301017	Riverside High School
2301	Greenville County Schools	2301018	Southside High School
2301	Greenville County Schools	2301020	Travelers Rest High School
2301	Greenville County Schools	2301023	Woodmont High School
2301	Greenville County Schools	2301024	Bryson Middle School
2301	Greenville County Schools	2301027	Gateway Elementary School
2301	Greenville County Schools	2301028	Alexander Elementary School
2301	Greenville County Schools	2301029	Beck Academy
2301	Greenville County Schools	2301030	Brook Glenn Elementary School
2301	Greenville County Schools	2301031	Armstrong Elementary School
2301	Greenville County Schools	2301034	Augusta Circle Elementary School
2301	Greenville County Schools	2301036	Berea Elementary School
2301	Greenville County Schools	2301037	Bethel Elementary School
2301	Greenville County Schools	2301038	Blythe Academy of Languages
2301	Greenville County Schools	2301039	Brushy Creek Elementary School
2301	Greenville County Schools	2301040	Bryson Elementary School
2301	Greenville County Schools	2301042	Berea Middle School
2301	Greenville County Schools	2301043	Sue Cleveland Elementary School
2301	Greenville County Schools	2301044	Sara Collins Elementary School
2301	Greenville County Schools	2301046	Plain Elementary School
2301	Greenville County Schools	2301047	Crestview Elementary School
2301	Greenville County Schools	2301051	Duncan Chapel Elementary School
2301	Greenville County Schools	2301052	Woodmont Middle School
2301	Greenville County Schools	2301054	East North Street Academy of Mathematics and Science
2301	Greenville County Schools	2301057	Fork Shoals Elementary School
2301	Greenville County Schools	2301058	Fountain Inn Elementary School
2301	Greenville County Schools	2301059	Greenville Middle Academy of Traditional and Global Studies
2301	Greenville County Schools	2301060	Greer Middle School
2301	Greenville County Schools	2301061	Hollis Academy
2301	Greenville County Schools	2301062	Hughes Academy of Science & Technology
2301	Greenville County Schools	2301063	Lake Forest Elementary School
2301	Greenville County Schools	2301066	Lakeview Middle School
2301	Greenville County Schools	2301067	Mauldin Elementary School
2301	Greenville County Schools	2301068	Mitchell Road Elementary School
2301	Greenville County Schools	2301069	Monaview Elementary School
2301	Greenville County Schools	2301071	Mountain View Elementary School
2301	Greenville County Schools	2301074	Northwood Middle School
2301	Greenville County Schools	2301076	Paris Elementary School

District Code	District Name	School Code	School Name
2301	Greenville County Schools	2301077	Northwest Middle School
2301	Greenville County Schools	2301078	League Academy of Communication Arts
2301	Greenville County Schools	2301079	Pelham Road Elementary School
2301	Greenville County Schools	2301081	Simpsonville Elementary School at Morton Place
2301	Greenville County Schools	2301083	Skyland Elementary School
2301	Greenville County Schools	2301084	Slater-Marietta Elementary School
2301	Greenville County Schools	2301085	Stone Academy of Communication Arts
2301	Greenville County Schools	2301086	Sevier Middle School
2301	Greenville County Schools	2301087	Summit Drive Elementary School
2301	Greenville County Schools	2301088	Tanglewood Middle School
2301	Greenville County Schools	2301089	Taylor's Elementary School
2301	Greenville County Schools	2301090	Tigerville Elementary School
2301	Greenville County Schools	2301093	Buena Vista Elementary School
2301	Greenville County Schools	2301095	Welcome Elementary School
2301	Greenville County Schools	2301098	Westcliffe Elementary School
2301	Greenville County Schools	2301099	Woodland Elementary School
2301	Greenville County Schools	2301100	Ellen Woodside Elementary School
2301	Greenville County Schools	2301101	Greenbrier Elementary School
2301	Greenville County Schools	2301104	Grove Elementary School
2301	Greenville County Schools	2301106	Blue Ridge Middle School
2301	Greenville County Schools	2301107	Heritage Elementary School
2301	Greenville County Schools	2301108	Oakview Elementary School
2301	Greenville County Schools	2301109	Chandler Creek Elementary School
2301	Greenville County Schools	2301110	Mauldin Middle School
2301	Greenville County Schools	2301111	Riverside Middle School
2301	Greenville County Schools	2301112	Bell's Crossing Elementary School
2301	Greenville County Schools	2301113	Robert E. Cashion Elementary School
2301	Greenville County Schools	2301114	Cherrydale Elementary School
2301	Greenville County Schools	2301115	Thomas E. Kerns Elementary School
2301	Greenville County Schools	2301116	Sterling School
2301	Greenville County Schools	2301117	Rudolph G. Gordon Elementary School at Jones Mill
2301	Greenville County Schools	2301118	Ralph Chandler Middle School
2301	Greenville County Schools	2301119	A.J. Whittenberg Elementary
2301	Greenville County Schools	2301120	Monarch Elementary
2301	Greenville County Schools	2301121	Dr. Phinnize J. Fisher Middle School
2301	Greenville County Schools	2301612	Langston Charter Middle
2450	Greenwood School District 50	2450001	Emerald High School
2450	Greenwood School District 50	2450002	Greenwood High School
2450	Greenwood School District 50	2450003	Northside Middle School
2450	Greenwood School District 50	2450008	Eleanor S. Rice Elementary
2450	Greenwood School District 50	2450009	Lakeview Elementary School
2450	Greenwood School District 50	2450011	Mathews Elementary School

District Code	District Name	School Code	School Name
2450	Greenwood School District 50	2450012	Merrywood Elementary School
2450	Greenwood School District 50	2450014	Pinecrest Elementary School
2450	Greenwood School District 50	2450016	Hodges Elementary School
2450	Greenwood School District 50	2450017	Brewer Middle School
2450	Greenwood School District 50	2450018	Woodfields Elementary School
2450	Greenwood School District 50	2450028	Springfield Elementary School
2450	Greenwood School District 50	2450029	Westview Middle School
2451	Greenwood County School District #51	2451020	Ware Shoals High School
2451	Greenwood County School District #51	2451022	Ware Shoals Primary School
2451	Greenwood County School District #51	2451024	Ware Shoals Elementary/Middle School
2452	Greenwood County School District #52	2452025	Ninety Six High School
2452	Greenwood County School District #52	2452026	Edgewood Middle School
2452	Greenwood County School District #52	2452027	Ninety Six Elementary School
2501	Hampton School District #1	2501001	Wade Hampton High School
2501	Hampton School District #1	2501004	Brunson Elementary
2501	Hampton School District #1	2501006	Hampton Elementary
2501	Hampton School District #1	2501008	North District Middle
2501	Hampton School District #1	2501009	Varnville Elementary
2501	Hampton School District #1	2501010	Fennell Elementary
2501	Hampton School District #1	2501018	Ben Hazel Primary
2502	Hampton School District #2	2502011	Estill High School
2502	Hampton School District #2	2502014	Estill Middle School
2502	Hampton School District #2	2502017	Estill Elementary School
2601	Horry County Schools	2601001	Aynor High School
2601	Horry County Schools	2601002	North Myrtle Beach High School
2601	Horry County Schools	2601004	Conway High School
2601	Horry County Schools	2601006	Green Sea-Floyds High School
2601	Horry County Schools	2601008	Loris High School
2601	Horry County Schools	2601010	Myrtle Beach High School
2601	Horry County Schools	2601011	Socastee High School
2601	Horry County Schools	2601013	Whittemore Park Middle School
2601	Horry County Schools	2601014	Aynor Elementary School
2601	Horry County Schools	2601016	Myrtle Beach Middle School
2601	Horry County Schools	2601017	Conway Middle School
2601	Horry County Schools	2601021	Daisy Elementary School
2601	Horry County Schools	2601023	Green Sea-Floyds Elementary School
2601	Horry County Schools	2601025	Homewood Elementary School
2601	Horry County Schools	2601027	Loris Middle School
2601	Horry County Schools	2601028	Kingston Elementary School
2601	Horry County Schools	2601029	Lakewood Elementary School
2601	Horry County Schools	2601030	Saint James Elementary School
2601	Horry County Schools	2601032	Loris Elementary School
2601	Horry County Schools	2601033	Midland Elementary School
2601	Horry County Schools	2601034	Myrtle Beach Elementary School

District Code	District Name	School Code	School Name
2601	Horry County Schools	2601036	Conway Elementary School
2601	Horry County Schools	2601037	North Myrtle Beach Middle School
2601	Horry County Schools	2601039	Pee Dee Elementary School
2601	Horry County Schools	2601042	Waccamaw Elementary School
2601	Horry County Schools	2601045	South Conway Elementary School
2601	Horry County Schools	2601046	Forestbrook Elementary School
2601	Horry County Schools	2601047	Saint James Middle School
2601	Horry County Schools	2601049	Carolina Forest Elementary School
2601	Horry County Schools	2601050	Seaside Elementary School
2601	Horry County Schools	2601051	Forestbrook Middle School
2601	Horry County Schools	2601052	Carolina Forest High School
2601	Horry County Schools	2601053	Myrtle Beach Intermediate School
2601	Horry County Schools	2601054	Socastee Elementary School
2601	Horry County Schools	2601056	Palmetto Bays Elementary School
2601	Horry County Schools	2601057	Aynor Middle School
2601	Horry County Schools	2601058	Saint James High School
2601	Horry County Schools	2601060	Ocean Bay Elementary School
2601	Horry County Schools	2601061	Ocean Bay Middle School
2601	Horry County Schools	2601062	Black Water Middle School
2601	Horry County Schools	2601063	Burgess Elementary School
2601	Horry County Schools	2601064	HCS Early College High School
2601	Horry County Schools	2601065	River Oaks Elementary
2601	Horry County Schools	2601066	Ocean Drive Elementary
2601	Horry County Schools	2601067	Waterway Elementary
2601	Horry County Schools	2601068	Riverside Elementary
2601	Horry County Schools	2601069	Socastee Middle School
2601	Horry County Schools	2601070	Ten Oaks Middle
2601	Horry County Schools	2601071	St. James Intermediate
2601	Horry County Schools	2601601	Bridgewater Academy Charter
2601	Horry County Schools	2601602	Palmetto Academy of Learn and Success Charter
2601	Horry County Schools	2601603	Academy of Hope Charter
2601	Horry County Schools	2601604	Palmetto Academy for Learning Motorsports
2701	Jasper County School District	2701010	Hardeeville Elementary School
2701	Jasper County School District	2701011	Ridgeland Elementary School
2701	Jasper County School District	2701012	Hardeeville Ridgeland Middle School
2701	Jasper County School District	2701013	Ridgeland Hardeeville High School
2801	Kershaw County School District	2801003	North Central High School
2801	Kershaw County School District	2801005	Camden High School
2801	Kershaw County School District	2801007	Lugoff-Elgin High School
2801	Kershaw County School District	2801010	Baron-Dekalb Elementary School
2801	Kershaw County School District	2801011	Bethune Elementary School
2801	Kershaw County School District	2801012	Blaney Elementary School
2801	Kershaw County School District	2801013	Jackson School

District Code	District Name	School Code	School Name
2801	Kershaw County School District	2801014	Camden Middle School
2801	Kershaw County School District	2801015	Camden Elementary School of the Creative Arts
2801	Kershaw County School District	2801016	Lugoff-Elgin Middle School
2801	Kershaw County School District	2801018	Lugoff Elementary School
2801	Kershaw County School District	2801019	Midway Elementary School
2801	Kershaw County School District	2801020	Mount Pisgah Elementary School
2801	Kershaw County School District	2801021	Pine Tree Hill Elementary School
2801	Kershaw County School District	2801022	Wateree Elementary School
2801	Kershaw County School District	2801023	Leslie M. Stover Middle School
2801	Kershaw County School District	2801024	Doby's Mill Elementary School
2801	Kershaw County School District	2801025	North Central Middle School
2901	Lancaster County School District	2901002	Buford High School
2901	Lancaster County School District	2901003	A. R. Rucker Middle School
2901	Lancaster County School District	2901006	Indian Land High School
2901	Lancaster County School District	2901007	Andrew Jackson High School
2901	Lancaster County School District	2901008	Lancaster High School
2901	Lancaster County School District	2901010	South Middle School
2901	Lancaster County School District	2901011	Brooklyn Springs Elementary School
2901	Lancaster County School District	2901012	Buford Elementary School
2901	Lancaster County School District	2901014	North Elementary School
2901	Lancaster County School District	2901015	Clinton Elementary School
2901	Lancaster County School District	2901017	Erwin Elementary School
2901	Lancaster County School District	2901019	Heath Springs Elementary School
2901	Lancaster County School District	2901021	Indian Land Elementary School
2901	Lancaster County School District	2901023	Kershaw Elementary School
2901	Lancaster County School District	2901024	McDonald Green Elementary School
2901	Lancaster County School District	2901027	Andrew Jackson Middle School
2901	Lancaster County School District	2901028	Buford Middle School
2901	Lancaster County School District	2901029	Indian Land Middle School
2901	Lancaster County School District	2901030	Harrisburg Elementary School
2901	Lancaster County School District	2901031	Van Wyck Elementary School
2901	Lancaster County School District	2901611	Discovery School of Lancaster County
3055	Laurens County School District No. 55	3055004	Laurens District 55 High School
3055	Laurens County School District No. 55	3055005	Laurens Middle School
3055	Laurens County School District No. 55	3055006	Ford Elementary School
3055	Laurens County School District No. 55	3055010	E. B. Morse Elementary School
3055	Laurens County School District No. 55	3055011	Laurens Elementary School
3055	Laurens County School District No. 55	3055013	Sanders Middle School
3055	Laurens County School District No. 55	3055014	Waterloo Elementary School
3055	Laurens County School District No. 55	3055016	Gray Court-Owings School
3055	Laurens County School District No. 55	3055017	Hickory Tavern School
3056	Laurens County School District 56	3056016	Clinton High School
3056	Laurens County School District 56	3056017	Clinton Middle School
3056	Laurens County School District 56	3056019	Clinton Elementary School

District Code	District Name	School Code	School Name
3056	Laurens County School District 56	3056022	Joanna-Woodson Elementary School
3056	Laurens County School District 56	3056023	Eastside Elementary School
3101	Lee County School District	3101007	Bishopville Primary School at Dennis
3101	Lee County School District	3101011	Lower Lee Elementary School
3101	Lee County School District	3101012	West Lee Elementary School
3101	Lee County School District	3101013	Lee Central High School
3101	Lee County School District	3101015	Lee Central Middle School
3201	Lexington County School District One	3201001	Gilbert High School
3201	Lexington County School District One	3201003	Lexington High School
3201	Lexington County School District One	3201004	Pelion High School
3201	Lexington County School District One	3201005	Gilbert Elementary School
3201	Lexington County School District One	3201007	Lexington Elementary School
3201	Lexington County School District One	3201008	Pelion Elementary School
3201	Lexington County School District One	3201009	Oak Grove Elementary School
3201	Lexington County School District One	3201010	Lexington Middle School
3201	Lexington County School District One	3201011	Red Bank Elementary School
3201	Lexington County School District One	3201049	White Knoll Elementary School
3201	Lexington County School District One	3201052	Saxe Gotha Elementary School
3201	Lexington County School District One	3201053	White Knoll Middle School
3201	Lexington County School District One	3201054	Gilbert Middle School
3201	Lexington County School District One	3201055	Midway Elementary School
3201	Lexington County School District One	3201056	Lake Murray Elementary School
3201	Lexington County School District One	3201057	White Knoll High School
3201	Lexington County School District One	3201058	Pelion Middle School
3201	Lexington County School District One	3201060	Pleasant Hill Elementary School
3201	Lexington County School District One	3201061	Pleasant Hill Middle School
3201	Lexington County School District One	3201062	Carolina Springs Elementary School
3201	Lexington County School District One	3201063	Carolina Springs Middle School
3201	Lexington County School District One	3201064	Forts Pond Elementary
3201	Lexington County School District One	3201065	New Providence Elementary School
3201	Lexington County School District One	3201066	Rocky Creek Elementary School
3201	Lexington County School District One	3201067	Meadow Glen Elementary
3201	Lexington County School District One	3201068	Meadow Glen Middle School
3201	Lexington County School District One	3201069	River Bluff High School
3201	Lexington County School District One	3201070	Deerfield Elementary
3202	Lexington County School District #2	3202009	Airport High School
3202	Lexington County School District #2	3202011	Brookland Cayce High School
3202	Lexington County School District #2	3202012	R. H. Fulmer Middle School
3202	Lexington County School District #2	3202017	Cyril B. Busbee Creative Arts Academy
3202	Lexington County School District #2	3202019	Congaree Elementary School
3202	Lexington County School District #2	3202020	Northside Middle School
3202	Lexington County School District #2	3202023	Saluda River Academy for the Arts
3202	Lexington County School District #2	3202024	Springdale Elementary School
3202	Lexington County School District #2	3202026	Pine Ridge Middle School

District Code	District Name	School Code	School Name
3202	Lexington County School District #2	3202027	Herbert A. Wood Elementary School
3202	Lexington County School District #2	3202029	Cayce Elementary School
3202	Lexington County School District #2	3202030	Riverbank Elementary
3203	Lexington County School District Three	3203026	Batesburg-Leesville High School
3203	Lexington County School District Three	3203028	Batesburg-Leesville Elementary School
3203	Lexington County School District Three	3203029	Batesburg-Leesville Middle School
3204	Lexington School District #4	3204034	Swansea High School
3204	Lexington School District #4	3204035	Frances Mack Intermediate
3204	Lexington School District #4	3204036	Sandhills Middle School
3204	Lexington School District #4	3204037	Swansea High Freshman Academy
3204	Lexington School District #4	3204039	Sandhills Elementary School
3205	School District Five of Lexington and Richland Counties	3205038	Chapin High School
3205	School District Five of Lexington and Richland Counties	3205039	Irmo High School
3205	School District Five of Lexington and Richland Counties	3205040	Irmo Middle School
3205	School District Five of Lexington and Richland Counties	3205041	Chapin Elementary School
3205	School District Five of Lexington and Richland Counties	3205042	Dutch Fork Elementary School
3205	School District Five of Lexington and Richland Counties	3205043	Irmo Elementary School
3205	School District Five of Lexington and Richland Counties	3205044	Leaphart Elementary School
3205	School District Five of Lexington and Richland Counties	3205045	Seven Oaks Elementary School
3205	School District Five of Lexington and Richland Counties	3205046	CrossRoads Intermediate
3205	School District Five of Lexington and Richland Counties	3205047	Nursery Road Elementary School
3205	School District Five of Lexington and Richland Counties	3205048	Harbison West Elementary School
3205	School District Five of Lexington and Richland Counties	3205049	Corley Elementary School
3205	School District Five of Lexington and Richland Counties	3205050	Chapin Intermediate School
3205	School District Five of Lexington and Richland Counties	3205051	Dutch Fork High School
3205	School District Five of Lexington and Richland Counties	3205052	Lake Murray Elementary School
3205	School District Five of Lexington and Richland Counties	3205053	River Springs Elementary School

District Code	District Name	School Code	School Name
3205	School District Five of Lexington and Richland Counties	3205054	Dutch Fork Middle School
3205	School District Five of Lexington and Richland Counties	3205055	Ballentine Elementary School
3205	School District Five of Lexington and Richland Counties	3205056	Oak Pointe Elementary School
3205	School District Five of Lexington and Richland Counties	3205057	Spring Hill High
3205	School District Five of Lexington and Richland Counties	3205058	Chapin Middle School
3301	McCormick County School District	3301001	McCormick High School
3301	McCormick County School District	3301002	McCormick Middle School
3301	McCormick County School District	3301003	McCormick Elementary School
3410	Marion County School District	3410002	Marion High School
3410	Marion County School District	3410004	Marion Intermediate School
3410	Marion County School District	3410007	Johnakin Middle School
3410	Marion County School District	3410008	Mullins High School
3410	Marion County School District	3410009	Palmetto Middle School
3410	Marion County School District	3410010	McCormick Elementary School
3410	Marion County School District	3410023	Britton's Neck Elementary School
3410	Marion County School District	3410024	Creek Bridge High School
3501	Marlboro County School District	3501020	McColl Elementary/Middle School
3501	Marlboro County School District	3501023	Clio Elementary/Middle School
3501	Marlboro County School District	3501025	Wallace Elementary/Middle School
3501	Marlboro County School District	3501026	Marlboro County High School
3501	Marlboro County School District	3501027	Blenheim Elementary/Middle School
3501	Marlboro County School District	3501028	Marlboro County School of Discovery
3501	Marlboro County School District	3501029	Bennettsville Intermediate School
3601	Newberry County School District	3601001	Newberry High School
3601	Newberry County School District	3601002	Mid-Carolina High School
3601	Newberry County School District	3601004	Whitmire Community School
3601	Newberry County School District	3601005	Boundary Street Elementary School
3601	Newberry County School District	3601008	Gallman Elementary School
3601	Newberry County School District	3601009	Pomaria/Garmany Elementary School
3601	Newberry County School District	3601010	Little Mountain Elementary School
3601	Newberry County School District	3601015	Reuben Elementary School
3601	Newberry County School District	3601018	Newberry Elementary School
3601	Newberry County School District	3601019	Mid-Carolina Middle School
3601	Newberry County School District	3601020	Newberry Middle School
3601	Newberry County School District	3601021	Whitmire Elementary School
3601	Newberry County School District	3601022	Prosperity-Rikard Elementary School
3701	Oconee County School District	3701005	Seneca High School
3701	Oconee County School District	3701006	Walhalla Middle School
3701	Oconee County School District	3701007	Walhalla High School

District Code	District Name	School Code	School Name
3701	Oconee County School District	3701008	West Oak High School
3701	Oconee County School District	3701012	Keowee Elementary School
3701	Oconee County School District	3701013	Northside Elementary School
3701	Oconee County School District	3701016	James M. Brown Elementary School
3701	Oconee County School District	3701017	Ravenel Elementary School
3701	Oconee County School District	3701020	Tamassee-Salem Elementary School
3701	Oconee County School District	3701022	Walhalla Elementary School
3701	Oconee County School District	3701023	Westminster Elementary School
3701	Oconee County School District	3701026	Seneca Middle School
3701	Oconee County School District	3701027	Fair-Oak Elementary School
3701	Oconee County School District	3701028	Orchard Park Elementary School
3701	Oconee County School District	3701030	West-Oak Middle School
3701	Oconee County School District	3701031	Blue Ridge Elementary
3803	Orangeburg County Consolidated School District 3	3803018	Holly Hill - Roberts Middle School
3803	Orangeburg County Consolidated School District 3	3803019	Holly Hill Elementary School
3803	Orangeburg County Consolidated School District 3	3803021	Saint James-Gaillard Elementary School
3803	Orangeburg County Consolidated School District 3	3803022	Vance-Providence Elementary School
3803	Orangeburg County Consolidated School District 3	3803047	Elloree Elementary School
3803	Orangeburg County Consolidated School District 3	3803048	Lake Marion High School & Technology Center
3804	Orangeburg Consolidated School District 4	3804024	Edisto High School
3804	Orangeburg Consolidated School District 4	3804025	Carver-Edisto Middle School
3804	Orangeburg Consolidated School District 4	3804049	Branchville High School
3804	Orangeburg Consolidated School District 4	3804051	Lockett Elementary School
3804	Orangeburg Consolidated School District 4	3804053	Edisto Elementary School
3804	Orangeburg Consolidated School District 4	3804054	Hunter-Kinard-Tyler Middle/High School
3804	Orangeburg Consolidated School District 4	3804055	Hunter-Kinard-Tyler Elementary School
3805	Orangeburg Consolidated School District #5	3805010	Bethune-Bowman Middle/High School
3805	Orangeburg Consolidated School District #5	3805012	Bethune-Bowman Elementary School

District Code	District Name	School Code	School Name
3805	Orangeburg Consolidated School District #5	3805026	Robert E. Howard Middle School
3805	Orangeburg Consolidated School District #5	3805028	Orangeburg-Wilkinson High School
3805	Orangeburg Consolidated School District #5	3805034	H. A. Marshall Elementary School
3805	Orangeburg Consolidated School District #5	3805036	Brookdale Elementary School
3805	Orangeburg Consolidated School District #5	3805037	William J. Clark Middle School
3805	Orangeburg Consolidated School District #5	3805039	Sheridan Elementary School
3805	Orangeburg Consolidated School District #5	3805040	Whittaker Elementary School
3805	Orangeburg Consolidated School District #5	3805042	North Middle High School
3805	Orangeburg Consolidated School District #5	3805044	Dover Elementary School
3805	Orangeburg Consolidated School District #5	3805057	Mellichamp Elementary School
3805	Orangeburg Consolidated School District #5	3805601	OCSD5 High School for Health Professions
3901	Pickens County School District	3901001	Dacusville Middle School
3901	Pickens County School District	3901002	R. C. Edwards Middle School
3901	Pickens County School District	3901003	D.W. Daniel High School
3901	Pickens County School District	3901004	Gettys Middle School
3901	Pickens County School District	3901005	Easley High School
3901	Pickens County School District	3901006	Liberty High School
3901	Pickens County School District	3901007	Pickens Middle School
3901	Pickens County School District	3901008	Pickens High School
3901	Pickens County School District	3901014	Central Academy of the Arts
3901	Pickens County School District	3901015	Crosswell Elementary School
3901	Pickens County School District	3901016	Dacusville Elementary School
3901	Pickens County School District	3901017	East End Elementary School
3901	Pickens County School District	3901018	Forest Acres Elementary School
3901	Pickens County School District	3901022	Liberty Elementary School
3901	Pickens County School District	3901023	Clemson Elementary School
3901	Pickens County School District	3901025	Pickens Elementary School
3901	Pickens County School District	3901027	Six Mile Elementary School
3901	Pickens County School District	3901028	West End Elementary School
3901	Pickens County School District	3901029	McKissick Academy of Science and Technology
3901	Pickens County School District	3901030	Liberty Middle School
3901	Pickens County School District	3901031	Chastain Road Elementary School
3901	Pickens County School District	3901032	Hagood Elementary School

District Code	District Name	School Code	School Name
3901	Pickens County School District	3901033	Ambler Elementary School
4001	Richland County School District One	4001002	Columbia High School
4001	Richland County School District One	4001004	Dreher High School
4001	Richland County School District One	4001005	Eau Claire High School
4001	Richland County School District One	4001007	A.C. Flora High School
4001	Richland County School District One	4001010	Hopkins Middle School
4001	Richland County School District One	4001011	C.A. Johnson High School
4001	Richland County School District One	4001012	W. J. Keenan High School
4001	Richland County School District One	4001013	Lower Richland High School
4001	Richland County School District One	4001016	Saint Andrews Middle School
4001	Richland County School District One	4001019	Alcorn Middle School
4001	Richland County School District One	4001020	Arden Elementary School
4001	Richland County School District One	4001024	Bradley Elementary School
4001	Richland County School District One	4001025	Brennen Elementary School
4001	Richland County School District One	4001027	Burnside Elementary School
4001	Richland County School District One	4001031	Crayton Middle School
4001	Richland County School District One	4001032	Caughman Road Elementary School
4001	Richland County School District One	4001034	W. G. Sanders Middle School
4001	Richland County School District One	4001036	Gadsden Elementary School
4001	Richland County School District One	4001037	Heyward Gibbes Middle School
4001	Richland County School District One	4001038	A. J. Lewis Greenview Elementary School
4001	Richland County School District One	4001039	Hand Middle School
4001	Richland County School District One	4001040	Hopkins Elementary School
4001	Richland County School District One	4001041	Horrell Hill Elementary School
4001	Richland County School District One	4001042	Hyatt Park Elementary School
4001	Richland County School District One	4001045	Logan Elementary School
4001	Richland County School District One	4001046	Meadowfield Elementary School
4001	Richland County School District One	4001047	Mill Creek Elementary School
4001	Richland County School District One	4001048	A. C. Moore Elementary School
4001	Richland County School District One	4001053	Edward E. Taylor Elementary School
4001	Richland County School District One	4001054	Rosewood Elementary School
4001	Richland County School District One	4001055	South Kilbourne Elementary School
4001	Richland County School District One	4001056	Satchel Ford Elementary School
4001	Richland County School District One	4001059	W. S. Sandel Elementary School
4001	Richland County School District One	4001060	H. B. Rhame Elementary School
4001	Richland County School District One	4001062	John P. Thomas Elementary School
4001	Richland County School District One	4001064	Webber Elementary School
4001	Richland County School District One	4001067	W. A. Perry Middle School
4001	Richland County School District One	4001088	Carver-Lyon Elementary School
4001	Richland County School District One	4001089	Burton-Pack Elementary School
4001	Richland County School District One	4001090	Pine Grove Elementary School
4001	Richland County School District One	4001091	Southeast Middle School
4001	Richland County School District One	4001092	Watkins-Nance Elementary School
4001	Richland County School District One	4001093	Forest Heights Elementary School

District Code	District Name	School Code	School Name
4001	Richland County School District One	4001094	Brockman Elementary School
4001	Richland County School District One	4001601	Richland One Charter Middle College
4001	Richland County School District One	4001603	Carolina School for Inquiry
4002	Richland County School District 2	4002069	Spring Valley High School
4002	Richland County School District 2	4002070	Bethel-Hanberry Elementary School
4002	Richland County School District 2	4002072	Dent Middle School
4002	Richland County School District 2	4002073	Conder Elementary Arts Integrated Magnet School
4002	Richland County School District 2	4002074	Forest Lake Elementary School
4002	Richland County School District 2	4002075	Joseph Keels Elementary School
4002	Richland County School District 2	4002076	Lonnie B. Nelson Elementary School
4002	Richland County School District 2	4002077	Windsor Elementary School
4002	Richland County School District 2	4002078	E. L. Wright Middle School
4002	Richland County School District 2	4002079	Richland Northeast High School
4002	Richland County School District 2	4002080	North Springs Elementary School
4002	Richland County School District 2	4002081	Pontiac Elementary School
4002	Richland County School District 2	4002082	Summit Parkway Middle School
4002	Richland County School District 2	4002083	Rice Creek Elementary School
4002	Richland County School District 2	4002084	Ridge View High School
4002	Richland County School District 2	4002085	Blythewood Middle School
4002	Richland County School District 2	4002086	Killian Elementary School
4002	Richland County School District 2	4002087	Bookman Road Elementary School
4002	Richland County School District 2	4002090	Round Top Elementary School
4002	Richland County School District 2	4002091	Kelly Mill Middle School
4002	Richland County School District 2	4002092	Blythewood High School
4002	Richland County School District 2	4002093	Sandlapper Elementary School
4002	Richland County School District 2	4002094	Polo Road Elementary School
4002	Richland County School District 2	4002095	Longleaf Middle School
4002	Richland County School District 2	4002096	Bridge Creek Elementary School
4002	Richland County School District 2	4002097	Langford Elementary School
4002	Richland County School District 2	4002098	Muller Road Middle School
4002	Richland County School District 2	4002100	Westwood High School
4002	Richland County School District 2	4002101	Catawba Trail Elementary School
4002	Richland County School District 2	4002102	Lake Carolina Elementary Upper Campus
4002	Richland County School District 2	4002103	Jackson Creek Elementary School
4002	Richland County School District 2	4002600	Richland Two Charter High School
4101	Saluda County School District #1	4101003	Saluda High School
4101	Saluda County School District #1	4101005	Saluda Middle School
4101	Saluda County School District #1	4101006	Saluda Elementary School
4101	Saluda County School District #1	4101010	Hollywood Elementary School
4201	Spartanburg County School District #1	4201002	Chapman High School
4201	Spartanburg County School District #1	4201003	Landrum High School
4201	Spartanburg County School District #1	4201004	Mabry Middle School
4201	Spartanburg County School District #1	4201006	Campobello-Gramling Elementary School

District Code	District Name	School Code	School Name
4201	Spartanburg County School District #1	4201007	O. P. Earle Elementary School
4201	Spartanburg County School District #1	4201009	Holly Springs-Motlow Elementary School
4201	Spartanburg County School District #1	4201010	Inman Elementary School
4201	Spartanburg County School District #1	4201011	New Prospect Elementary School
4201	Spartanburg County School District #1	4201087	Landrum Middle School
4201	Spartanburg County School District #1	4201088	Inman Intermediate School
4202	Spartanburg County School District #2	4202012	Boiling Springs High School
4202	Spartanburg County School District #2	4202013	Chesnee High School
4202	Spartanburg County School District #2	4202014	Boiling Springs Middle School
4202	Spartanburg County School District #2	4202015	Boiling Springs Elementary School
4202	Spartanburg County School District #2	4202018	Chesnee Elementary School
4202	Spartanburg County School District #2	4202019	Cooley Springs-Fingerville Elementary School
4202	Spartanburg County School District #2	4202020	James H. Hendrix Elementary School
4202	Spartanburg County School District #2	4202023	Mayo Elementary School
4202	Spartanburg County School District #2	4202024	Boiling Springs Intermediate School
4202	Spartanburg County School District #2	4202025	Boiling Springs High 9th Grade
4202	Spartanburg County School District #2	4202086	Chesnee Middle School
4202	Spartanburg County School District #2	4202087	Carlisle-Foster's Grove Elementary School
4202	Spartanburg County School District #2	4202088	Oakland Elementary School
4202	Spartanburg County School District #2	4202089	Rainbow Lake Middle School
4202	Spartanburg County School District #2	4202090	Shoally Creek Elementary School
4203	Spartanburg County School District #3	4203025	Cowpens Middle School
4203	Spartanburg County School District #3	4203026	Broome High School
4203	Spartanburg County School District #3	4203027	Middle School of Pacolet
4203	Spartanburg County School District #3	4203028	Cannons Elementary School
4203	Spartanburg County School District #3	4203030	Cowpens Elementary School
4203	Spartanburg County School District #3	4203031	Clifdale Elementary School
4203	Spartanburg County School District #3	4203034	Pacolet Elementary School
4204	Spartanburg County School District #4	4204035	Woodruff Middle School
4204	Spartanburg County School District #4	4204036	Woodruff High School
4204	Spartanburg County School District #4	4204042	Woodruff Elementary School
4205	Spartanburg County School District #5	4205043	James F. Byrnes High School
4205	Spartanburg County School District #5	4205045	D. R. Hill Middle School
4205	Spartanburg County School District #5	4205046	Duncan Elementary School
4205	Spartanburg County School District #5	4205049	Reidville Elementary School
4205	Spartanburg County School District #5	4205052	Wellford Academy of Science and Technology
4205	Spartanburg County School District #5	4205089	Beech Springs Intermediate School
4205	Spartanburg County School District #5	4205090	River Ridge Elementary School
4205	Spartanburg County School District #5	4205091	Berry Shoals Intermediate School
4205	Spartanburg County School District #5	4205092	Florence Chapel Middle School
4205	Spartanburg County School District #5	4205093	James F. Byrnes Freshman Academy
4205	Spartanburg County School District #5	4205094	Abner Creek Academy
4205	Spartanburg County School District #5	4205095	Lyman Elementary School
4206	Spartanburg County School District #6	4206053	Paul M. Dorman High School

District Code	District Name	School Code	School Name
4206	Spartanburg County School District #6	4206054	Fairforest Middle School
4206	Spartanburg County School District #6	4206056	L. E. Gable Middle School
4206	Spartanburg County School District #6	4206057	Arcadia Elementary School
4206	Spartanburg County School District #6	4206058	Fairforest Elementary School
4206	Spartanburg County School District #6	4206060	R. P. Dawkins Middle School
4206	Spartanburg County School District #6	4206061	Lone Oak Elementary School
4206	Spartanburg County School District #6	4206062	Pauline-Glenn Springs Elementary School
4206	Spartanburg County School District #6	4206065	Jesse S. Bobo Elementary School
4206	Spartanburg County School District #6	4206066	West View Elementary School
4206	Spartanburg County School District #6	4206067	Woodland Heights Elementary School
4206	Spartanburg County School District #6	4206086	Roebuck Elementary School
4206	Spartanburg County School District #6	4206088	Anderson Mill Elementary School
4206	Spartanburg County School District #6	4206089	Dorman Freshman Campus
4207	Spartanburg School District Seven	4207068	Carver Middle School
4207	Spartanburg School District Seven	4207071	McCracken Middle School
4207	Spartanburg School District Seven	4207073	Spartanburg High School
4207	Spartanburg School District Seven	4207074	Jesse Boyd Elementary School
4207	Spartanburg School District Seven	4207075	E.P. Todd School
4207	Spartanburg School District Seven	4207077	The Cleveland Academy of Leadership
4207	Spartanburg School District Seven	4207082	Pine Street Elementary School
4207	Spartanburg School District Seven	4207085	Mary H. Wright Elementary School
4207	Spartanburg School District Seven	4207087	Drayton Mills Elementary
4207	Spartanburg School District Seven	4207200	Meeting St. Academy-Spartanburg
4301	Sumter School District	4301002	Ebenezer Middle School
4301	Sumter School District	4301003	Furman Middle School
4301	Sumter School District	4301004	Hillcrest Middle School
4301	Sumter School District	4301008	Cherryvale Elementary School
4301	Sumter School District	4301010	R. E. Davis College Preparatory Academy
4301	Sumter School District	4301012	High Hills Elementary School
4301	Sumter School District	4301014	Manchester Elementary School
4301	Sumter School District	4301017	Rafting Creek Elementary School
4301	Sumter School District	4301019	Shaw Heights Elementary School
4301	Sumter School District	4301021	Alice Drive Middle School
4301	Sumter School District	4301022	Bates Middle School
4301	Sumter School District	4301024	Sumter High School
4301	Sumter School District	4301026	Alice Drive Elementary School
4301	Sumter School District	4301029	Crosswell Drive Elementary School
4301	Sumter School District	4301031	Lemira Elementary School
4301	Sumter School District	4301033	Millwood Elementary School
4301	Sumter School District	4301038	Wilder Elementary School
4301	Sumter School District	4301039	Willow Drive Elementary School
4301	Sumter School District	4301040	Pocalla Springs Elementary School
4301	Sumter School District	4301041	Kingsbury Elementary School
4301	Sumter School District	4301042	Crestwood High School

District Code	District Name	School Code	School Name
4301	Sumter School District	4301043	Lakewood High School
4301	Sumter School District	4301044	Chestnut Oaks Middle School
4401	Union County Schools	4401004	Sims Middle School
4401	Union County Schools	4401005	Union County High School
4401	Union County Schools	4401007	Buffalo Elementary School
4401	Union County Schools	4401012	Foster Park Elementary School
4401	Union County Schools	4401014	Jonesville Elementary Middle School
4401	Union County Schools	4401017	Monarch Elementary School
4501	Williamsburg County School District	4501006	Hemingway High School
4501	Williamsburg County School District	4501007	Kingstree Middle Magnet School of the Arts
4501	Williamsburg County School District	4501008	Kingstree Senior High School
4501	Williamsburg County School District	4501011	D.P. Cooper Elementary School
4501	Williamsburg County School District	4501012	C.E. Murray High School
4501	Williamsburg County School District	4501017	Greeleyville Elementary School
4501	Williamsburg County School District	4501021	Kenneth Gardner Elementary School
4501	Williamsburg County School District	4501024	Hemingway Elementary School
4501	Williamsburg County School District	4501025	Hemingway M.B Lee Middle School
4501	Williamsburg County School District	4501027	C. E. Murray Middle
4601	York 01	4601003	York Comprehensive High School
4601	York 01	4601008	Jefferson Elementary School
4601	York 01	4601044	York Middle School
4601	York 01	4601045	Hickory Grove/Sharon Elementary School
4601	York 01	4601046	Hunter Street Elementary School
4601	York 01	4601047	Cotton Belt Elementary School
4601	York 01	4601048	York Intermediate School
4601	York 01	4601049	Harold C. Johnson Elementary School
4602	York 02 (Clover)	4602010	Clover High School
4602	York 02 (Clover)	4602011	Bethany Elementary School
4602	York 02 (Clover)	4602012	Bethel Elementary School
4602	York 02 (Clover)	4602013	Clover Middle School
4602	York 02 (Clover)	4602014	Kinard Elementary School
4602	York 02 (Clover)	4602016	Oakridge Middle School
4602	York 02 (Clover)	4602018	Larne Elementary
4602	York 02 (Clover)	4602047	Griggs Road Elementary School
4602	York 02 (Clover)	4602051	Crowders Creek Elementary School
4602	York 02 (Clover)	4602052	Oakridge Elementary School
4603	York 03 (Rock Hill)	4603015	Castle Heights Middle School
4603	York 03 (Rock Hill)	4603016	Northwestern High School
4603	York 03 (Rock Hill)	4603017	Rock Hill High School
4603	York 03 (Rock Hill)	4603018	Sullivan Middle School
4603	York 03 (Rock Hill)	4603019	Rawlinson Road Middle School
4603	York 03 (Rock Hill)	4603020	Bellevue Elementary School
4603	York 03 (Rock Hill)	4603022	Ebenezer Avenue Elementary: Traditional Montessori Inquiry

District Code	District Name	School Code	School Name
4603	York 03 (Rock Hill)	4603023	Ebinport Elementary School
4603	York 03 (Rock Hill)	4603026	Finley Road Elementary School
4603	York 03 (Rock Hill)	4603027	Lesslie Elementary School
4603	York 03 (Rock Hill)	4603029	Northside Elementary School of the Arts
4603	York 03 (Rock Hill)	4603030	Oakdale Elementary School
4603	York 03 (Rock Hill)	4603031	Richmond Drive Elementary School
4603	York 03 (Rock Hill)	4603032	Rosewood Elementary School
4603	York 03 (Rock Hill)	4603033	Sunset Park Elementary School
4603	York 03 (Rock Hill)	4603035	York Road Elementary
4603	York 03 (Rock Hill)	4603036	Independence Elementary School
4603	York 03 (Rock Hill)	4603037	Mount Gallant Elementary School
4603	York 03 (Rock Hill)	4603038	Saluda Trail Middle School
4603	York 03 (Rock Hill)	4603039	India Hook Elementary School
4603	York 03 (Rock Hill)	4603040	Old Pointe Elementary
4603	York 03 (Rock Hill)	4603041	South Pointe High School
4603	York 03 (Rock Hill)	4603042	Dutchman Creek Middle School
4603	York 03 (Rock Hill)	4603043	Mount Holly Elementary School
4603	York 03 (Rock Hill)	4603044	Cherry Park Elementary School of Language Immersion
4603	York 03 (Rock Hill)	4603602	The Palmetto School at the Children's Attention Home
4604	York 04 (Fort Mill)	4604036	Fort Mill High School
4604	York 04 (Fort Mill)	4604037	Fort Mill Middle School
4604	York 04 (Fort Mill)	4604042	Riverview Elementary School
4604	York 04 (Fort Mill)	4604043	Fort Mill Elementary School
4604	York 04 (Fort Mill)	4604048	Gold Hill Elementary School
4604	York 04 (Fort Mill)	4604049	Gold Hill Middle School
4604	York 04 (Fort Mill)	4604051	Orchard Park Elementary School
4604	York 04 (Fort Mill)	4604052	Springfield Elementary School
4604	York 04 (Fort Mill)	4604053	Springfield Middle School
4604	York 04 (Fort Mill)	4604054	Nation Ford High School
4604	York 04 (Fort Mill)	4604055	Pleasant Knoll Elementary
4604	York 04 (Fort Mill)	4604056	Sugar Creek Elementary School
4604	York 04 (Fort Mill)	4604057	Banks Trail Middle School
4604	York 04 (Fort Mill)	4604058	Tega Cay Elementary School
4604	York 04 (Fort Mill)	4604059	Doby's Bridge Elementary School
4604	York 04 (Fort Mill)	4604060	Pleasant Knoll Middle School
4701	South Carolina Public Charter School District	4701003	South Carolina Connections Academy
4701	South Carolina Public Charter School District	4701006	Spartanburg Preparatory School
4701	South Carolina Public Charter School District	4701010	Palmetto Scholars Academy

District Code	District Name	School Code	School Name
4701	South Carolina Public Charter School District	4701011	York Preparatory Academy
4701	South Carolina Public Charter School District	4701013	East Point Academy Charter School
4701	South Carolina Public Charter School District	4701014	South Carolina Whitmore School
4701	South Carolina Public Charter School District	4701017	Youth Leadership Academy
4701	South Carolina Public Charter School District	4701019	Cape Romain Environmental Education Charter School
4701	South Carolina Public Charter School District	4701020	Fox Creek High School
4701	South Carolina Public Charter School District	4701021	Midlands Middle College
4701	South Carolina Public Charter School District	4701023	Lowcountry Leadership Charter School
4701	South Carolina Public Charter School District	4701026	Green Charter School
4701	South Carolina Public Charter School District	4701027	Bridges Preparatory School
4701	South Carolina Public Charter School District	4701029	Pee Dee Math, Science, & Tech Academy
4701	South Carolina Public Charter School District	4701030	Quest Leadership Academy
4701	South Carolina Public Charter School District	4701033	Riverwalk Academy
4701	South Carolina Public Charter School District	4701034	High Point Academy Spartanburg
4701	South Carolina Public Charter School District	4701036	LEAD Charter School
4701	South Carolina Public Charter School District	4701037	Lowcountry Montessori School
4701	South Carolina Public Charter School District	4701039	NEXT High School
4701	South Carolina Public Charter School District	4701040	Tall Pines STEM Academy
4701	South Carolina Public Charter School District	4701042	Felton Laboratory Charter School
4701	South Carolina Public Charter School District	4701043	Greenville Technical Charter High School
4701	South Carolina Public Charter School District	4701044	GREEN Charter Schools of Midlands
4701	South Carolina Public Charter School District	4701046	Brashier Middle College

District Code	District Name	School Code	School Name
4701	South Carolina Public Charter School District	4701047	Greer Middle College
4701	South Carolina Public Charter School District	4701048	Legacy Early College
4701	South Carolina Public Charter School District	4701050	East Link Academy
4701	South Carolina Public Charter School District	4701051	Bettis Preparatory Leadership Academy
4701	South Carolina Public Charter School District	4701053	Polaris Tech Charter School
4701	South Carolina Public Charter School District	4701054	Lakes and Bridges Charter School
4701	South Carolina Public Charter School District	4701055	Charleston Acceleration Academy
4701	South Carolina Public Charter School District	4701056	Midland Arts Conservatory
4801	Charter Institute at Erskine	4801001	Virtus Academy of South Carolina
4801	Charter Institute at Erskine	4801003	The Montessori School of Camden
4801	Charter Institute at Erskine	4801004	Royal Live Oaks Academy of the Arts and Sciences Charter School
4801	Charter Institute at Erskine	4801005	Oceanside Collegiate Academy
4801	Charter Institute at Erskine	4801006	Mevers School of Excellence
4801	Charter Institute at Erskine	4801007	Gray Collegiate Academy
4801	Charter Institute at Erskine	4801008	Coastal Leadership Academy
4801	Charter Institute at Erskine	4801009	Midlands STEM Institute
4801	Charter Institute at Erskine	4801010	Odyssey Online Learning
4801	Charter Institute at Erskine	4801011	South Carolina Virtual Charter School
4801	Charter Institute at Erskine	4801012	Cyber Academy of South Carolina
4801	Charter Institute at Erskine	4801013	Calhoun Falls Charter
5207	South Carolina School for the Deaf and the Blind	5207005	SC School for the Blind High School
5207	South Carolina School for the Deaf and the Blind	5207007	SC School for the Deaf High School
5207	South Carolina School for the Deaf and the Blind	5207009	SC School For Deaf Elementary/Middle
5207	South Carolina School for the Deaf and the Blind	5207010	SC School for Blind Elementary/Middle
5207	South Carolina School for the Deaf and the Blind	5207011	Cedar Springs Academy
5208	Department of Juvenile Justice	5208001	Willow Lane School
5208	Department of Juvenile Justice	5208002	Birchwood School
5208	Department of Juvenile Justice	5208003	Evaluation & Detention Center

Table D1. South Carolina Districts and Schools that Participated in 2019 Cognia Student Engagement Survey